

Groundwater Sustainability Program Update Agenda Item 5

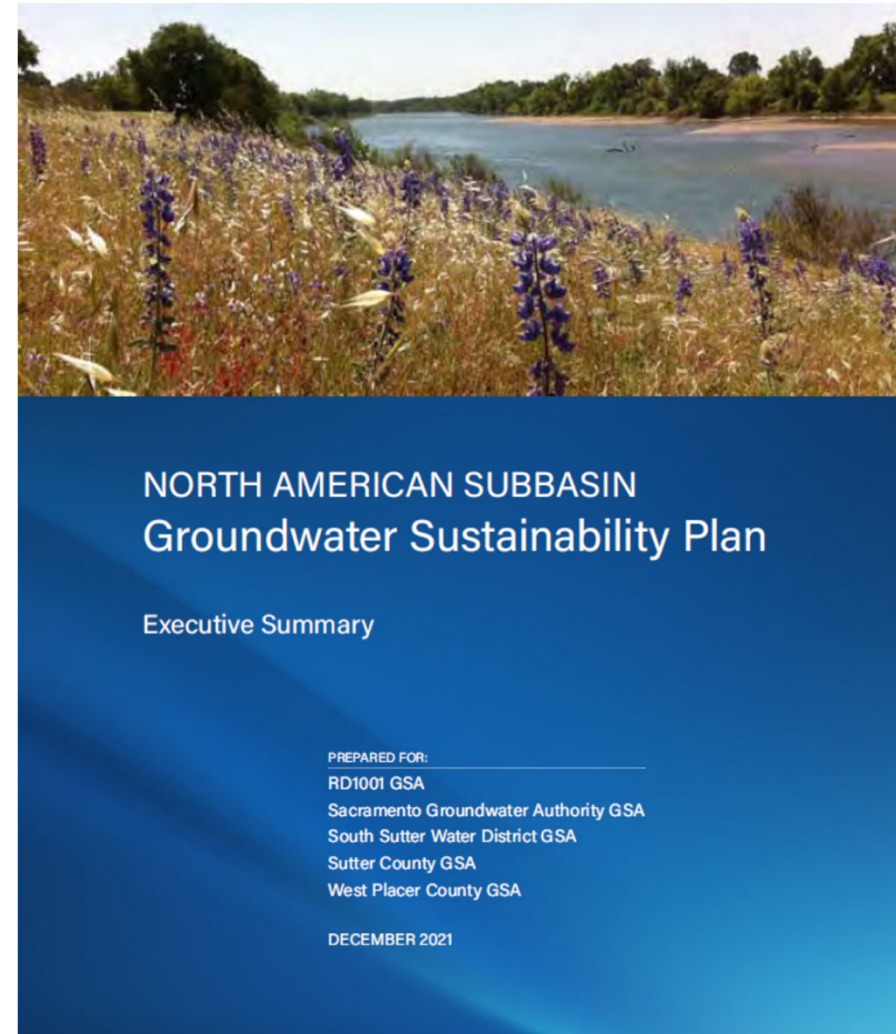
October 13, 2022

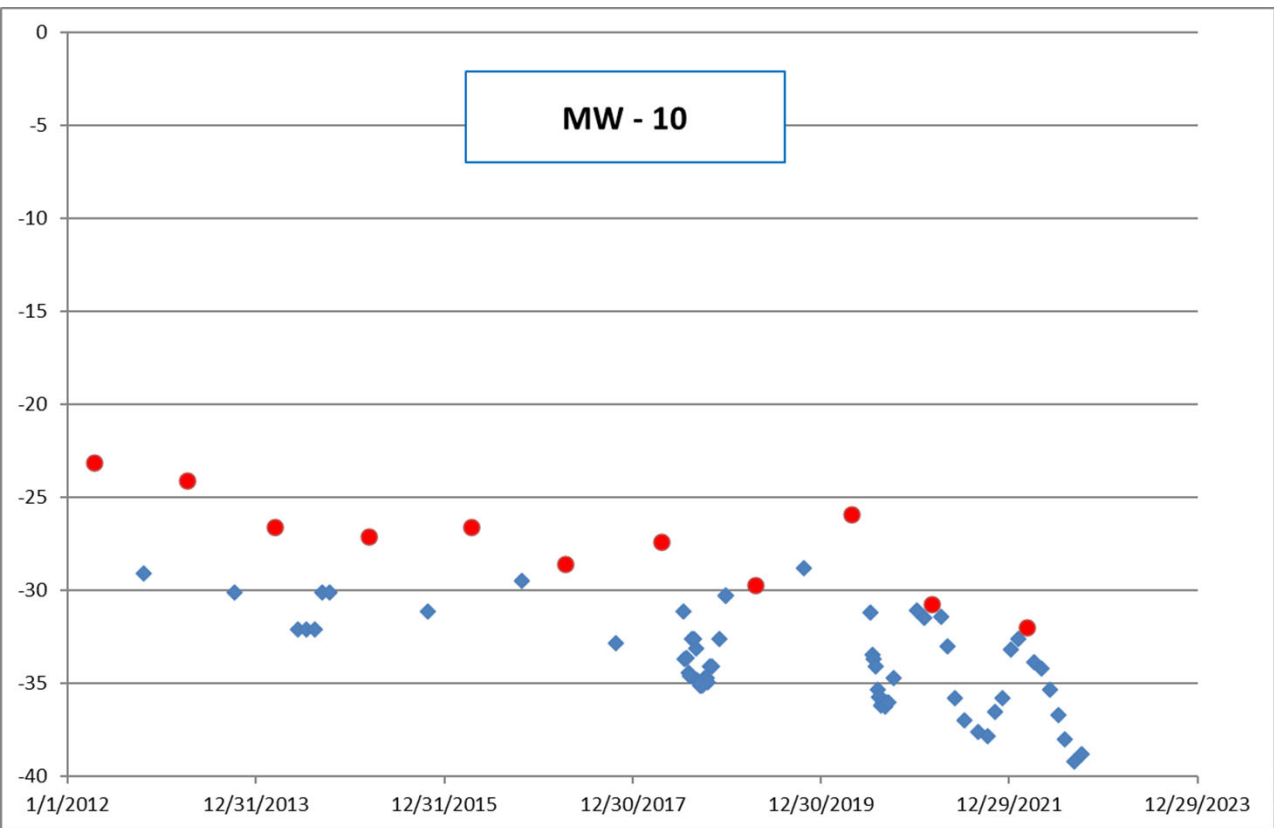


GSP Implementation

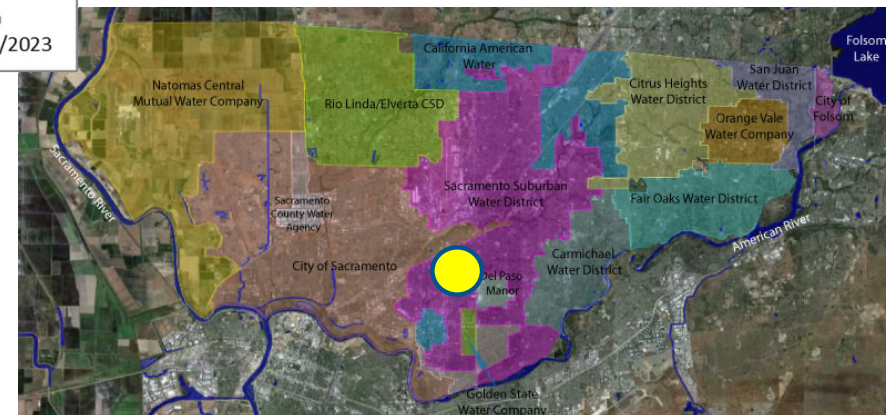
Starting Annual Report

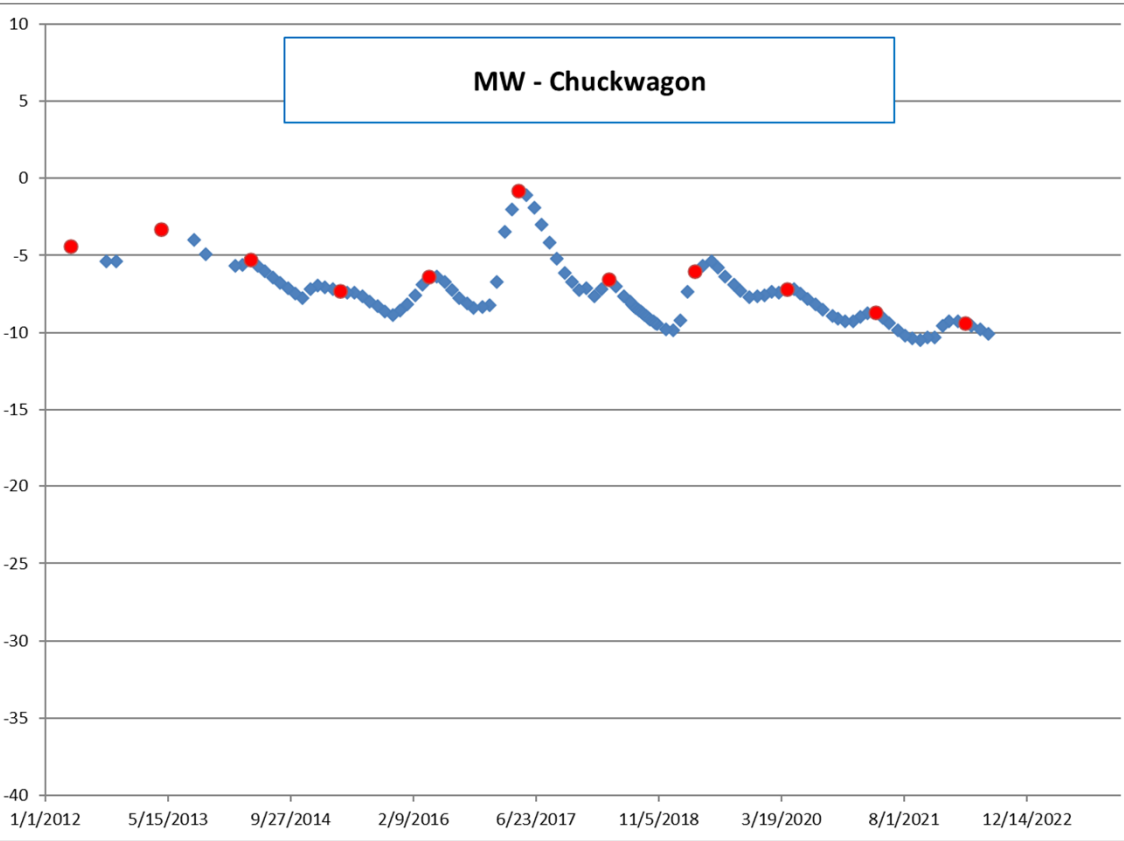
- Collecting fall water levels
- Annual data request
 - monthly pumping by well
 - monthly diversions
 - well status update
- information on water quality issues



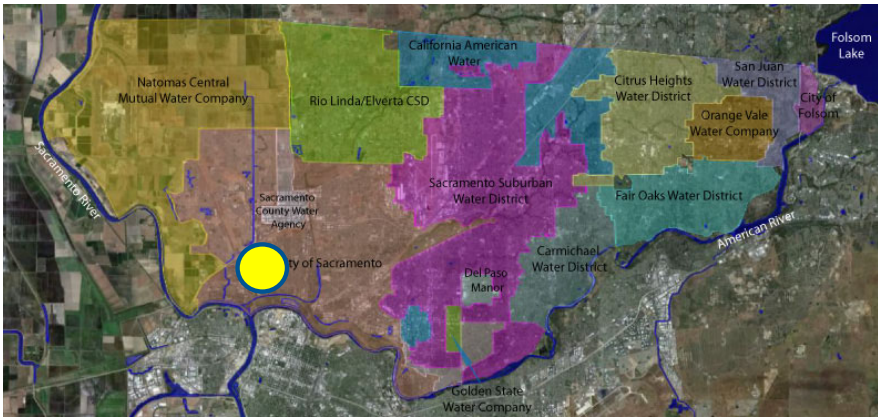


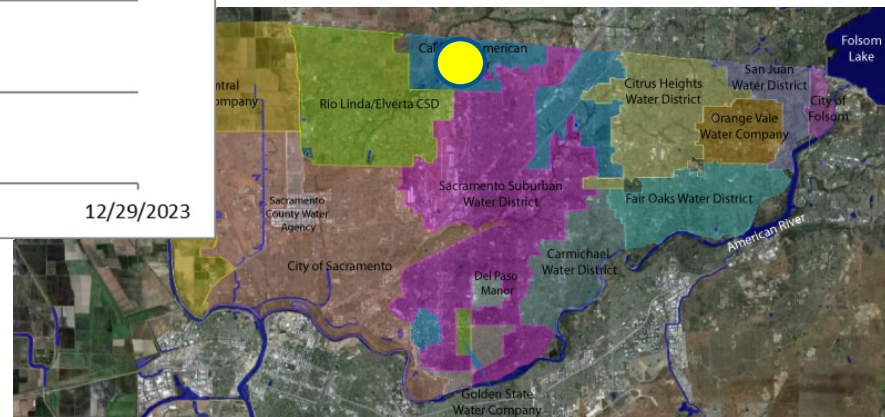
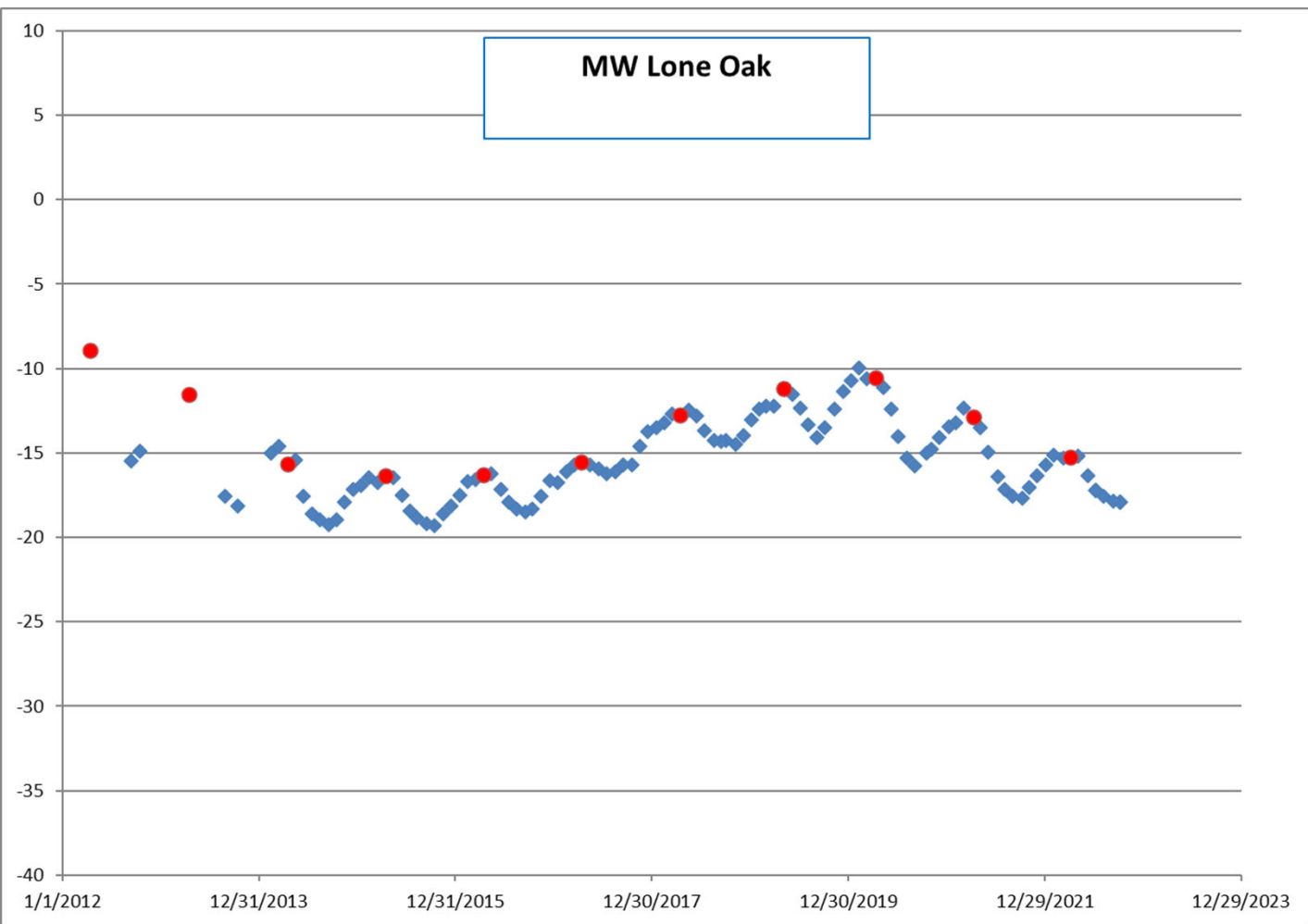
Spring 1997
groundwater elevation
around -42 feet

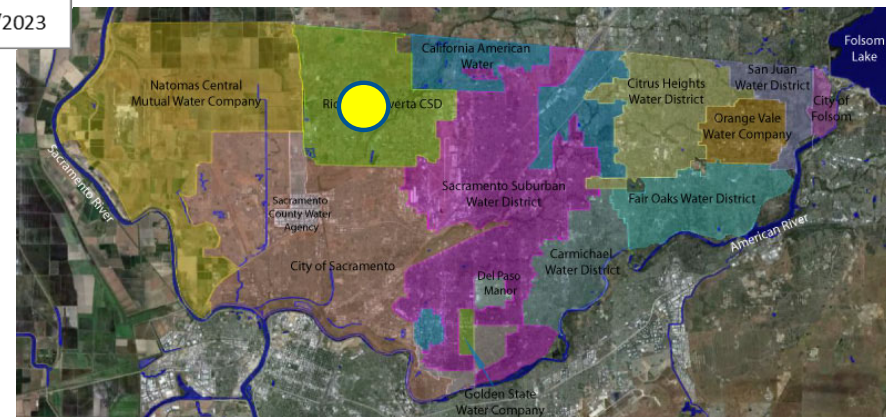
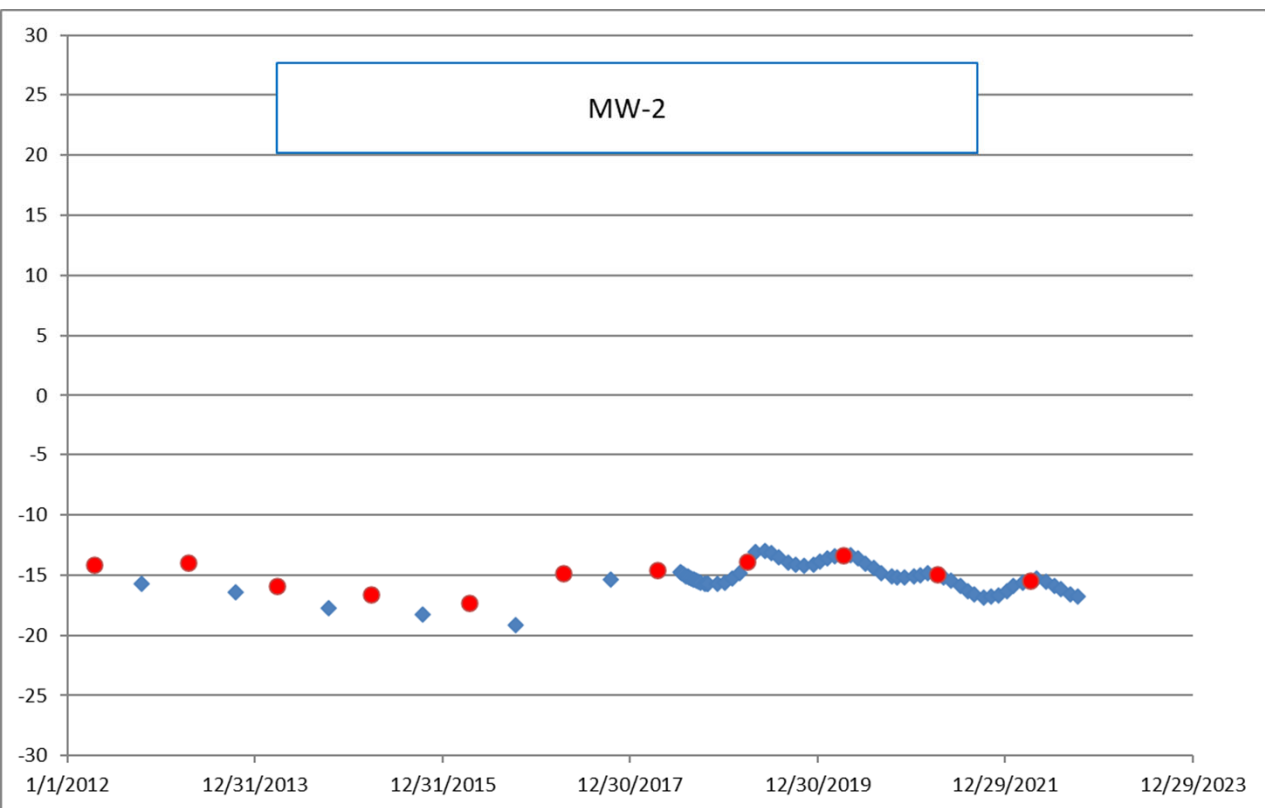




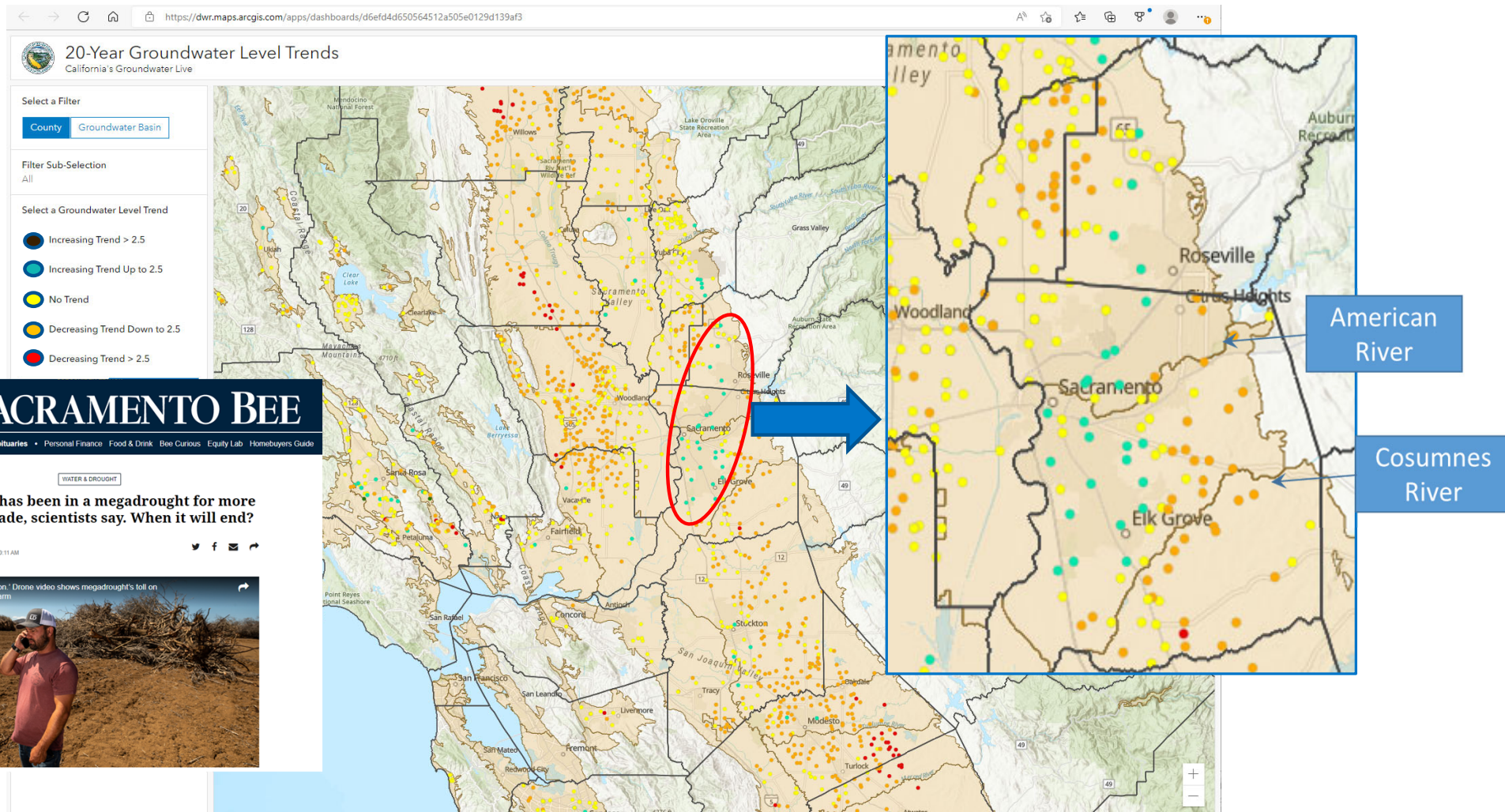
August 2009
groundwater elevation
around -11 feet







Region is prime example of effective water management



Questions/ Discussion

