

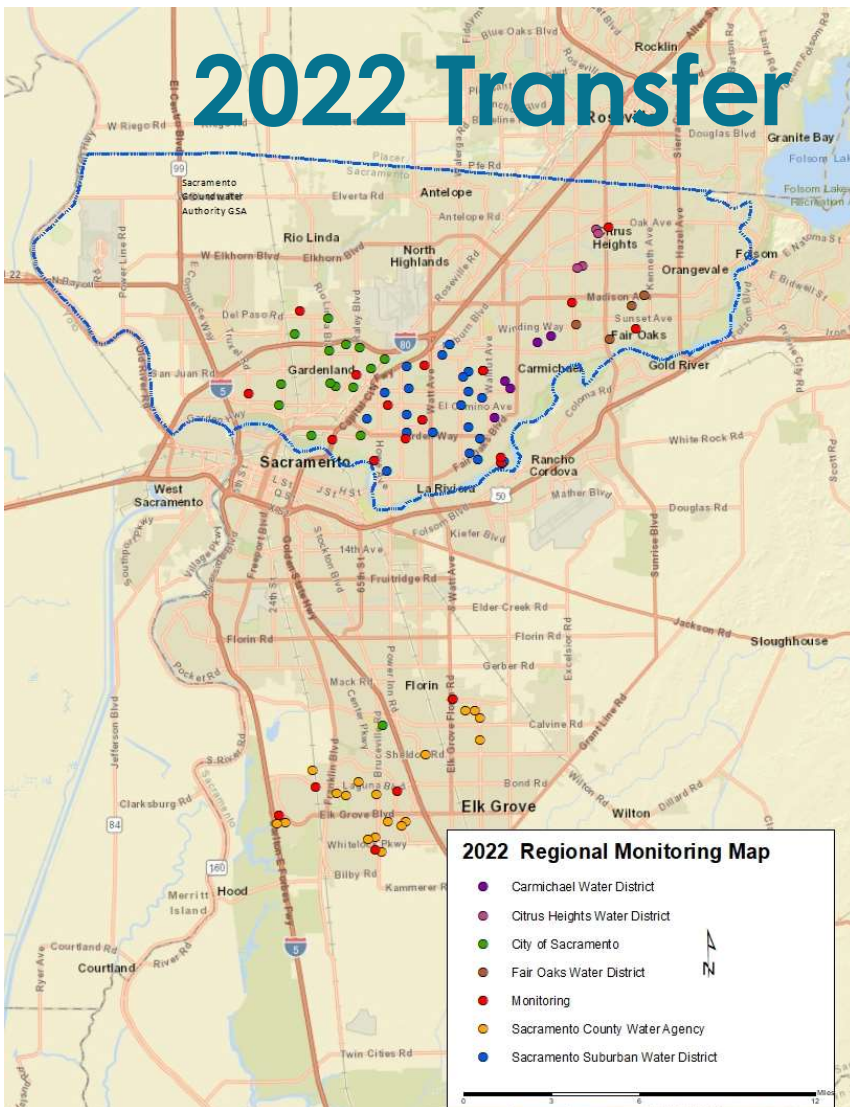
Groundwater Sustainability Program Update Agenda Item 5

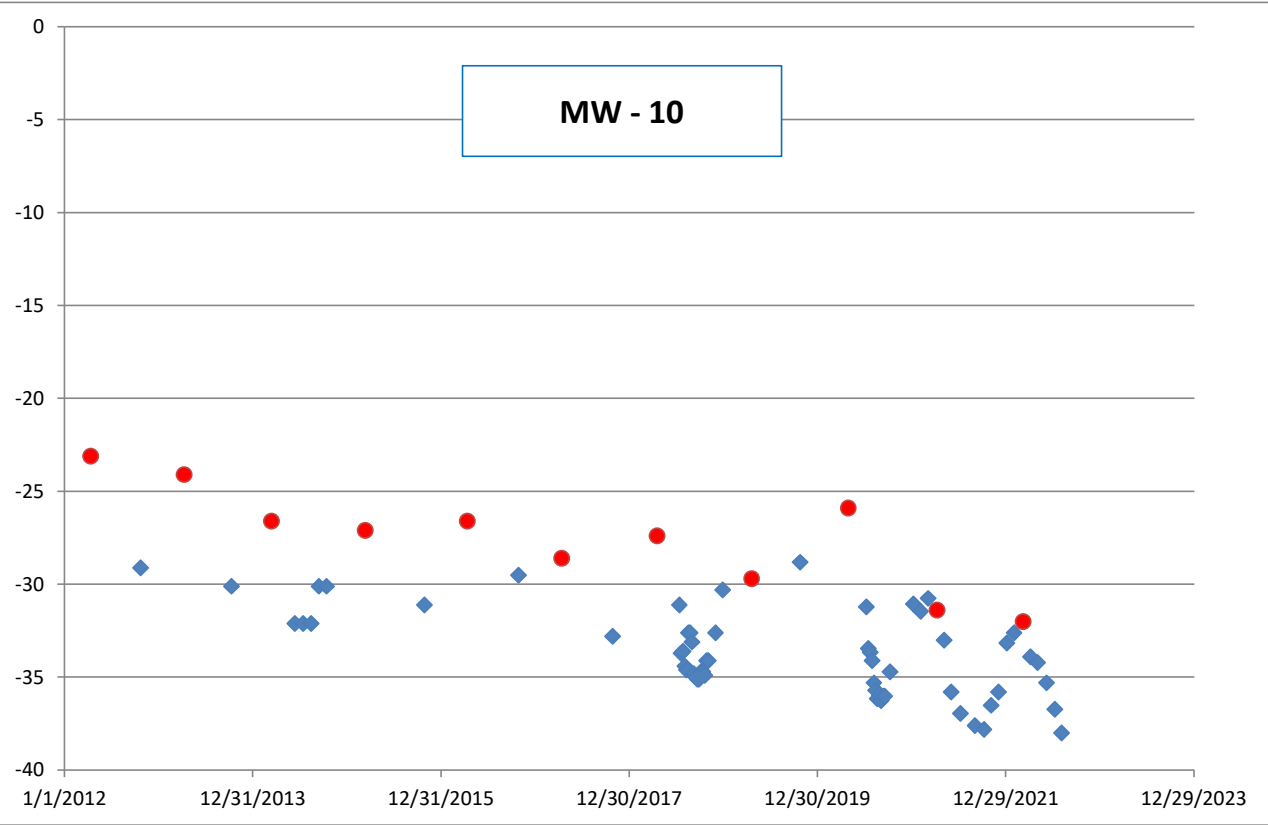
August 11, 2022



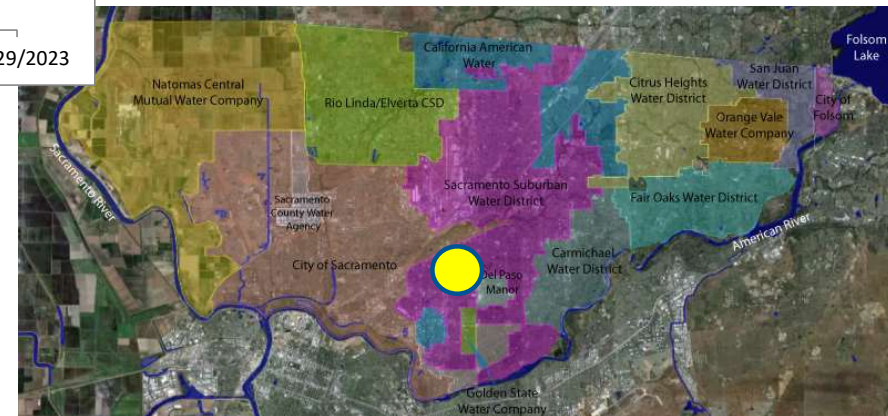
2022 Transfer

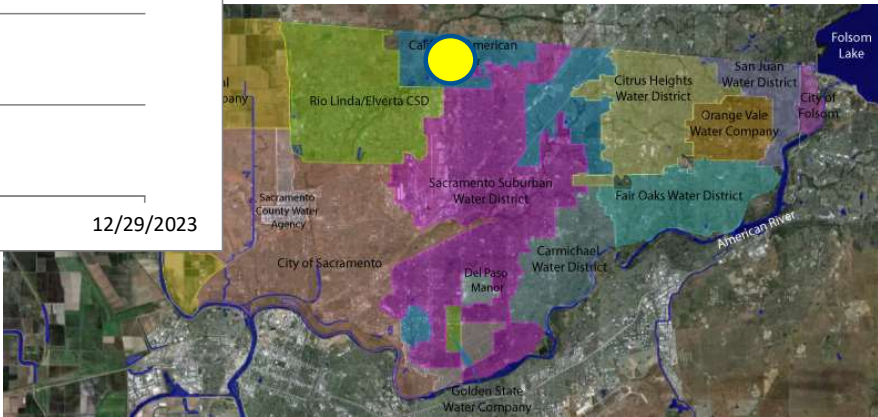
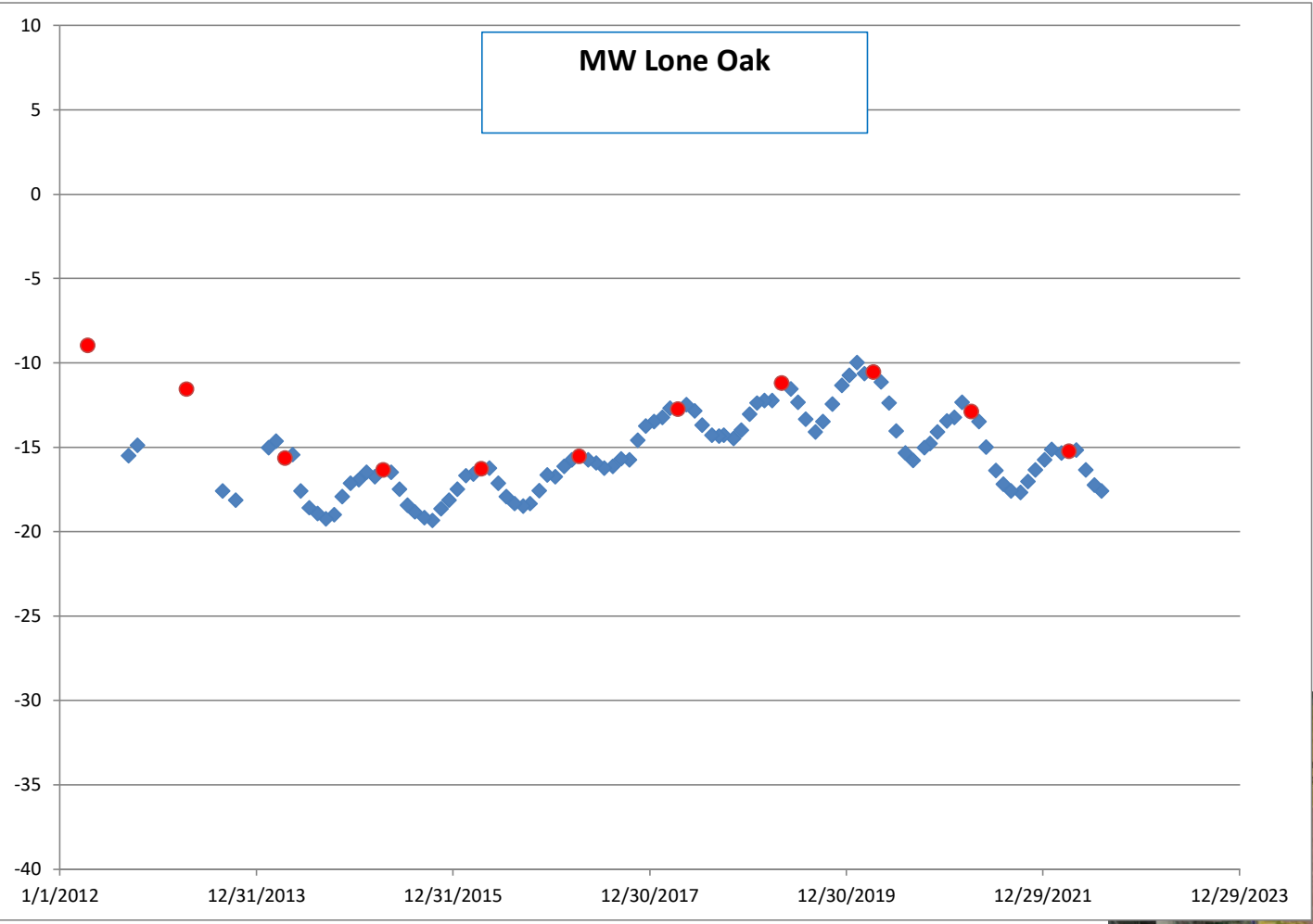
- Temporary transfer of surface water right by using additional groundwater to meet demand
 - Approximately 13,000 acre-feet July through November in SGA
 - Consistent with SGA Water Accounting Framework
1. Carmichael WD
 2. City of Sacramento
 - Sacramento Suburban WD
 - Sacramento County WA (in South Basin only)
 3. San Juan WD
 - Citrus Heights WD
 - Fair Oaks WD

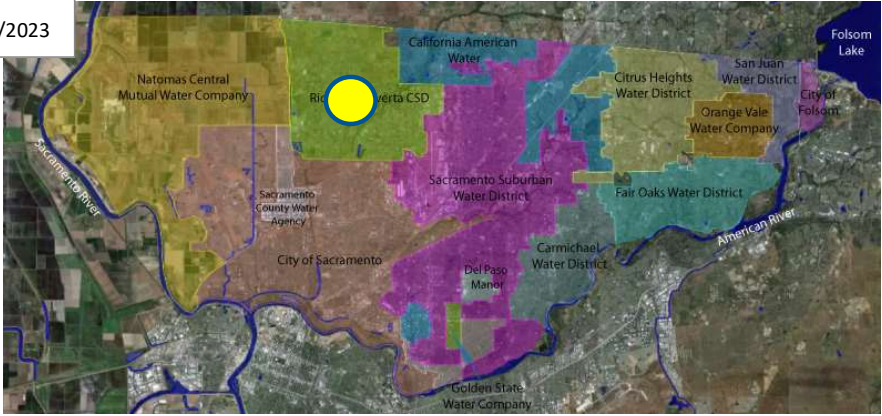
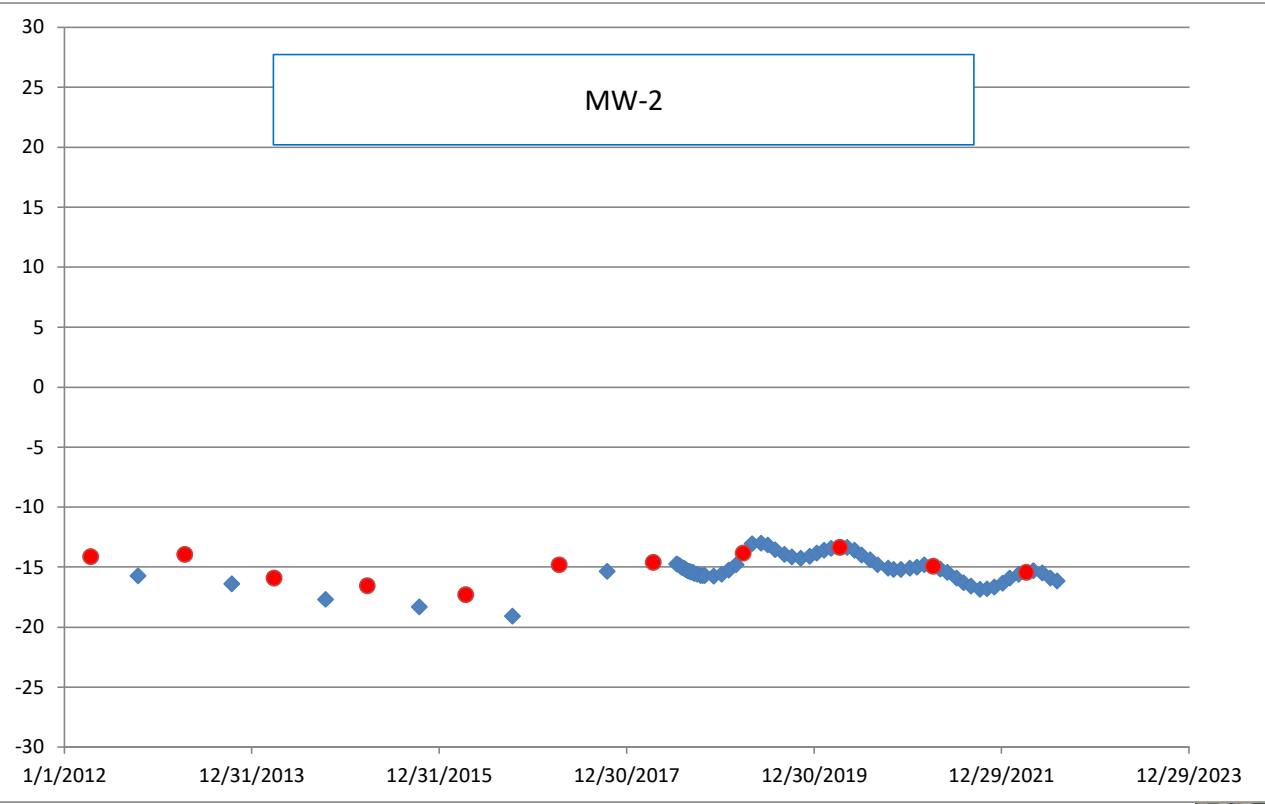




Spring 1997
groundwater elevation
around -42 feet

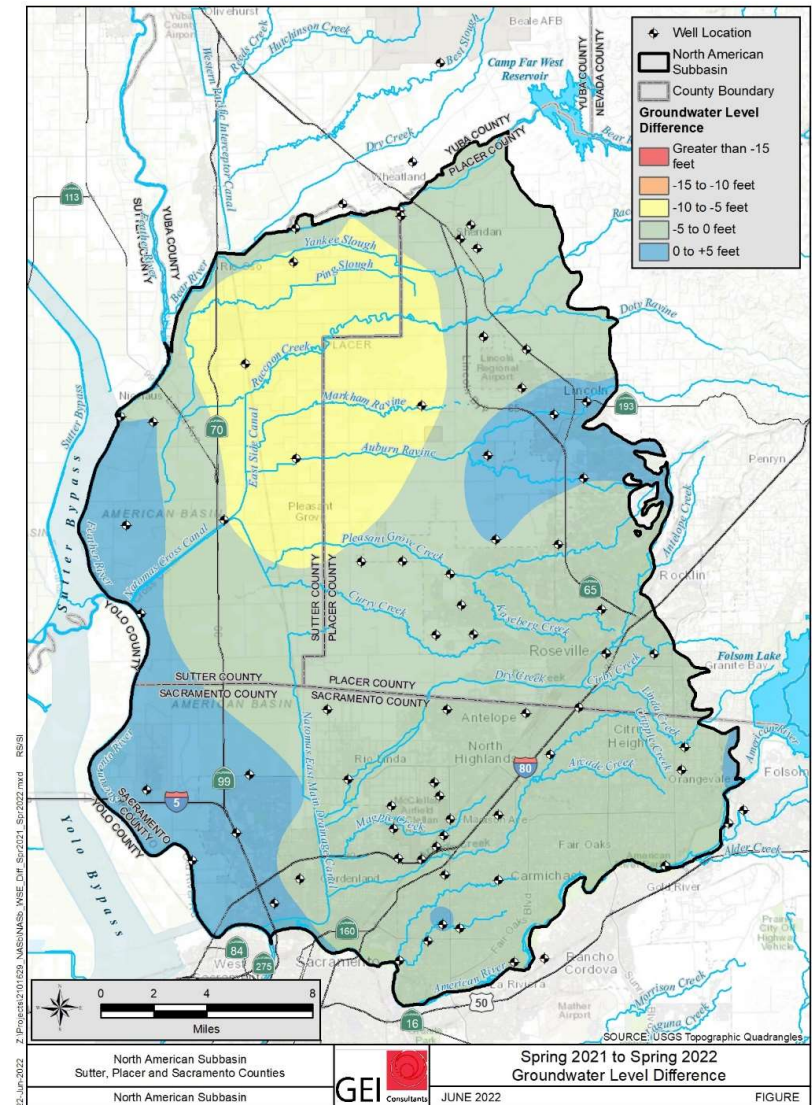






GSP Implementation

- Updated spring contour maps
- Annual public meeting on June 28
- Interbasin coordination meetings with Yuba and Yolo basins on August 4
- Preparing implementation tracking table
- Starting domestic well identification effort

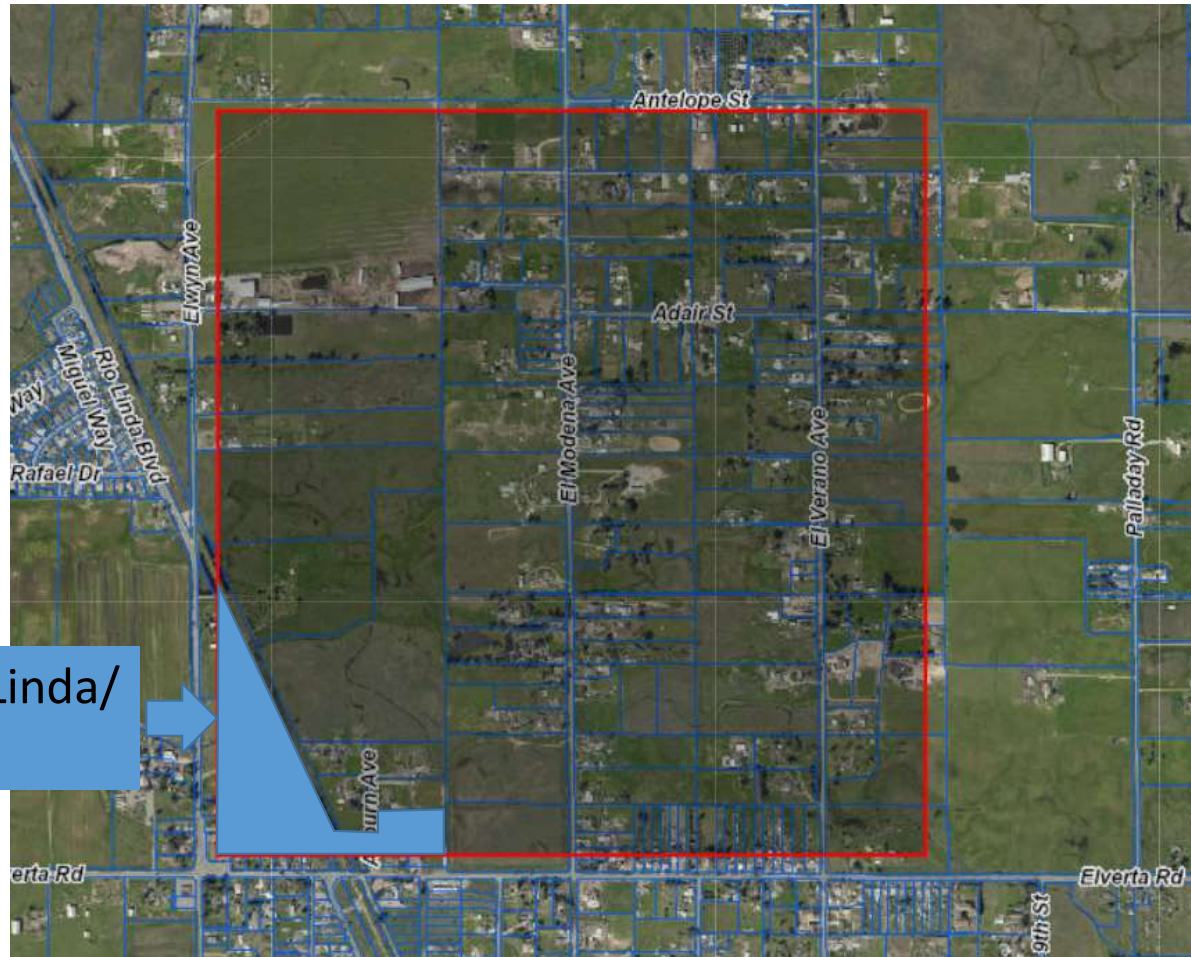


GSP Tracking Table

NASb GSP Implementation Actions Tracker

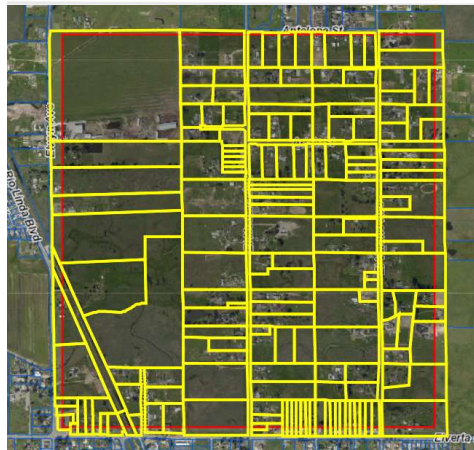
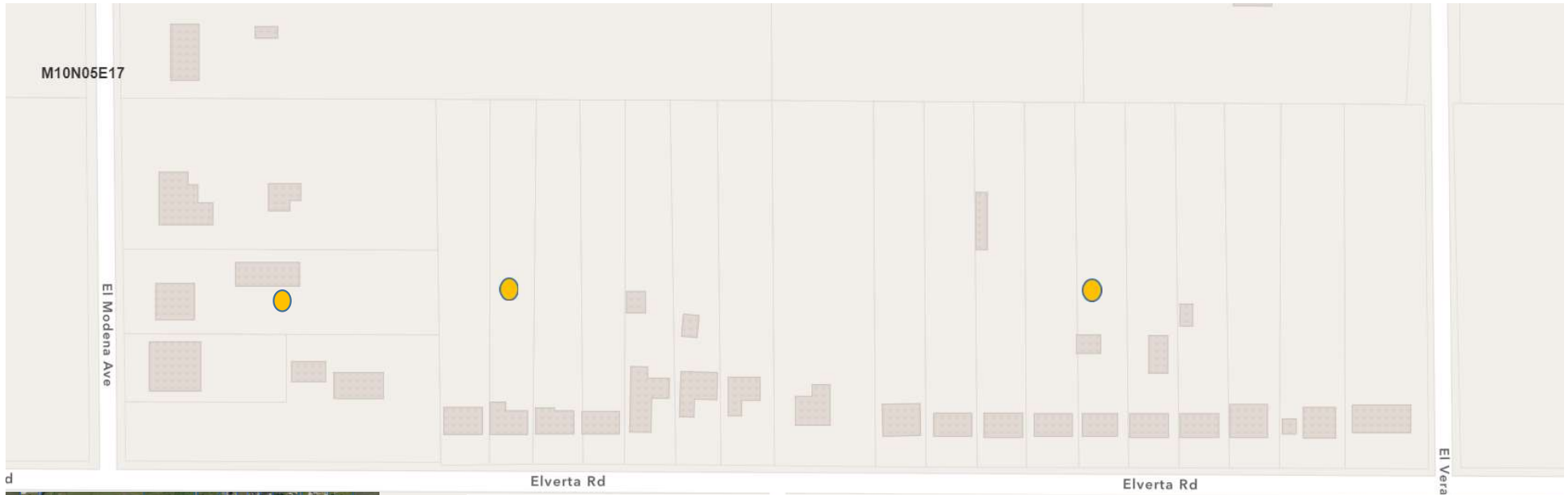
Implementation Action	2022			
	Action Due/Requirements	Status	Comments	Responsibility
Monitoring				
<i>Groundwater Elevation Monitoring</i>				
1. Continue ongoing semi-annual monitoring of the groundwater elevation monitoring network.	<i>Semi-annual</i>	In Progress	Complete for spring 2022.	All NASb GSAs
2. Conduct confirmation water level monitoring, as needed.	<i>As needed</i>	In Progress	More frequent monitoring being conducted at sites that measured below MT in fall 2021	GSA where MT occurs
3. Download transducer data semi-annually.	<i>Semi-annual</i>	In Progress	Spring 2022 data downloaded. Fall 2022 to occur in October 2022.	
<i>Groundwater Quality Monitoring</i>				
1. Download public supply well water quality monitoring data for TDS and Nitrates from the State DDW by December 31st of each year for MT and MO evaluation.	<i>December 31st</i>	Complete for 2022	Downloaded 224 distinct datapoints for TDS and 246 distinct values for N in February 2022.	SGA
2. Download data for Arsenic, Hexavalent Chromium, Iron, and Manganese from DDW as it becomes available for individual public supply wells and observe for trends. <i>If future upward trends emerge for these constituents, assess if establishing sustainable management criteria for them would be beneficial.</i>	<i>As available</i>	Incomplete	To commence before end of 2022.	SGA
3. Collect water quality samples in the shallow water quality monitoring network in the Fall of odd numbered years (e.g., 2023).	<i>Not applicable for the 2022 year</i>	-	-	-
<i>Subsidence Monitoring</i>				
1. No current action required unless water level MT exceedances are occurring or if optional DWR InSAR monitoring indicates a potential undesirable result.	<i>None</i>	-	-	-
<i>Other Monitoring</i>				
1. Collect additional monitoring data (e.g., surface water stages) from the CDEC on an as-needed basis (e.g., during preparation of Annual Report).	<i>As needed</i>			
Data Management				
1. Upload groundwater elevation data on an ongoing basis to CASGEM (or other applicable State SGMA database) within one month after semi-annual monitoring	<i>One month after semi-annual monitoring</i>			
2. Upload water quality data from shallow monitoring well network by December 31 of each year that it is collected.	<i>December 31st</i>			

Domestic Well Identification Effort



Served by Rio Linda/
Elverta CWD

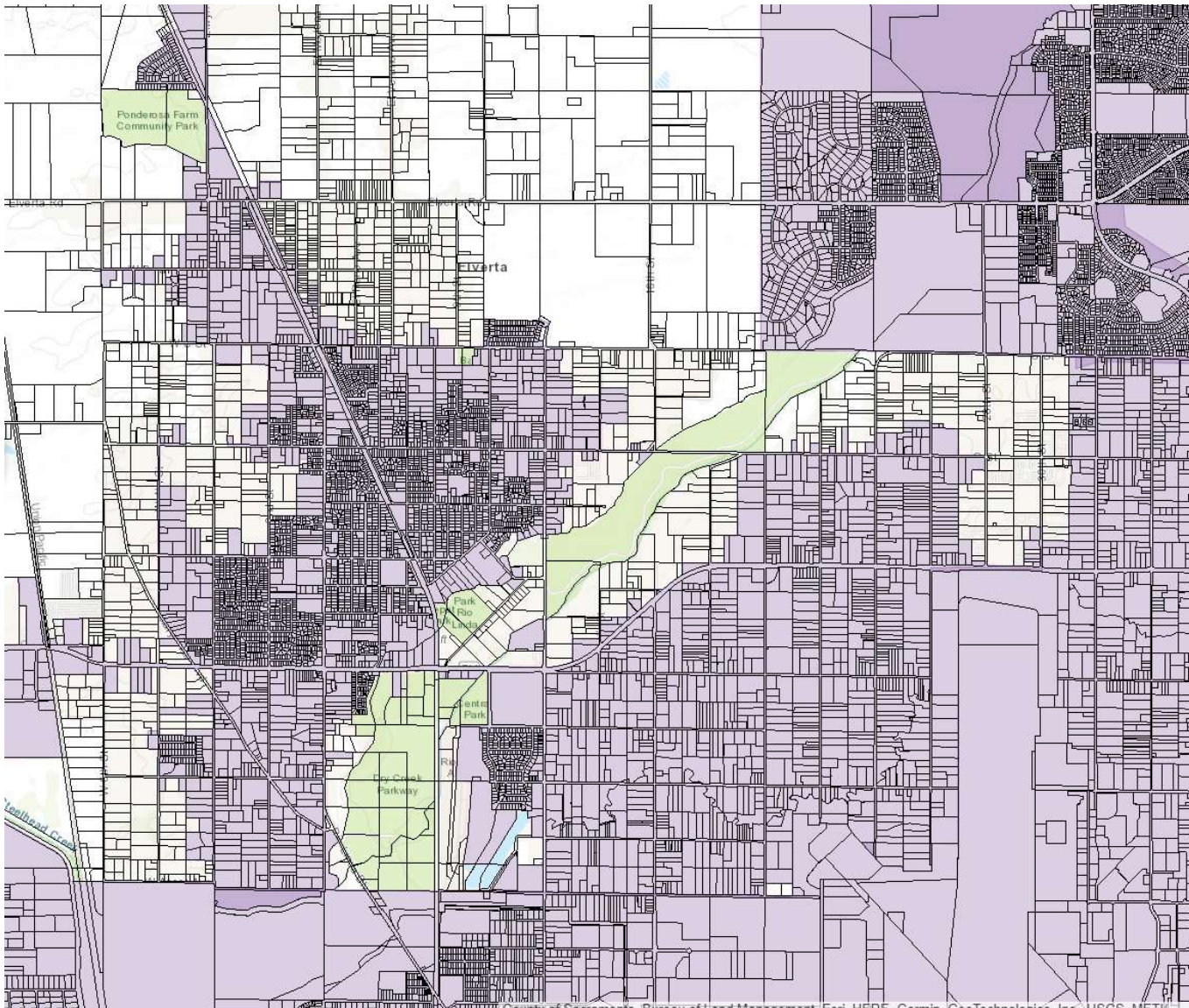
Domestic Well Identification Effort



M10N05E17	
# of Parcels	173
Parcels with Improvements	121
# of Well Completion Reports (WCR)	61
WCRs that can be located at a parcel	34

Domestic Well Identification Effort

	A	J	K	Y	AI	AJ	AK	AM	AN	AO	AP	AQ
1	Well presence confirmed	Likely well is present - no data	Uncertain/Unlikely	No Well Present								
2												
3												
4	APN	Full Address	City	Mailing Zip	Well Potential	WCR Number	Permit Number	Planned Use/Former	Activity	Driller Name	Drilling Method	Date
27	20200420110000	8729 EL VERANO AVE	ELVERTA	95829	Likely well is present - no data on it							
28	20200420120000	510 ANTELOPE ST	ELVERTA	95626	Likely well is present - no data on it							
29	20200420130000	532 ANTELOPE ST	ELVERTA	95626	Likely well is present - no data on it							
30	20200420140000	540 ANTELOPE ST	ELVERTA	95626	Well is present - data on Complete Excel, WCR, and GAMA	WCR2004-004324	469559	Water Supply Domestic	New Well	GOODELL WELL & PUMP SERVICE	Cable Tool	4/27/2004
31	20200420150000	610 ANTELOPE ST	ELVERTA	95626	Well is present - data on WCR and GAMA	WCR2004-001049	910480	Water Supply Domestic	New Well	GOODELL WELL & PUMP SERVICE	Cable Tool	4/27/2004
32	20200430010000	8535 EL VERANO AVE	ELVERTA	95626	Likely well is present - no data on it							
33	20200430020000	8533 EL VERANO AVE	ELVERTA	95626	Likely well is present - no data on it							
34	20200430030000	8531 EL VERANO AVE	ELVERTA	95626	Well is present - data on complete excel, WCR, and GAMA	WCR2002-001412	732052	Water Supply Domestic	New Well	GOODELL WELL & PUMP SERVICE	Cable Tool	12/14/2002
39	20200510010000	8400 ELWYN AVE	ELVERTA	95626	Unlikely well is present							
61	20202000030000	RIO LINDA BLVD	ELVERTA	95827	No well is present							
62	20202000040000	RIO LINDA BLVD	ELVERTA	95827	No well is present							



- ~190,000 parcels in SGA
- Need information from purveyors on parcels they serve
- Optional – information on parcels served that also have their own well

Questions/ Discussion

