



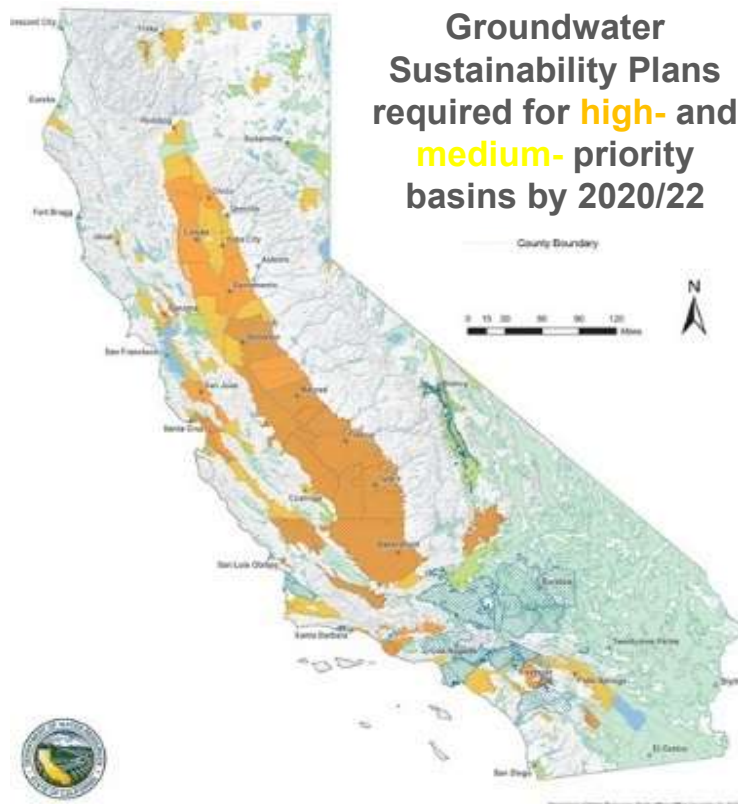
Agenda Item 5

Groundwater Sustainability Plan Adoption

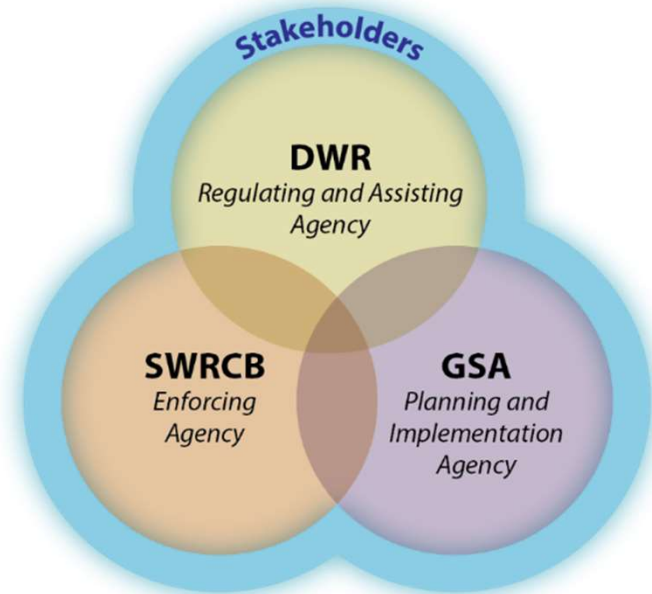
SGA Board | December 9, 2021

Sustainable Groundwater Management Act (SGMA)

Groundwater Basins




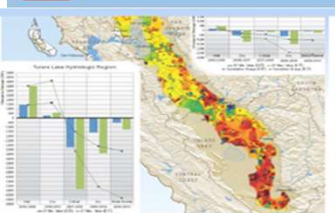
Roles



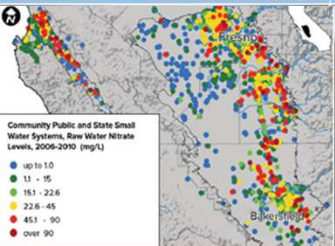
Demonstrating Sustainability Under SGMA



 Lowering of GW Levels



 Reduction of GW Storage



 Water Quality Degradation



 Land Subsidence



 Seawater Intrusion

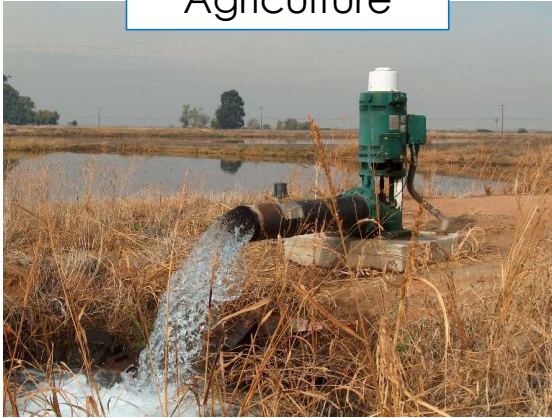


 Depletion of Interconnected Streams

- Define ***significant and unreasonable*** undesirable results for six indicators (five in our case)
- In consideration of beneficial uses and users
 - Establish criteria to track progress (measurable objectives and minimum thresholds)
 - Develop a representative monitoring network

Beneficial Uses and Users

Agriculture



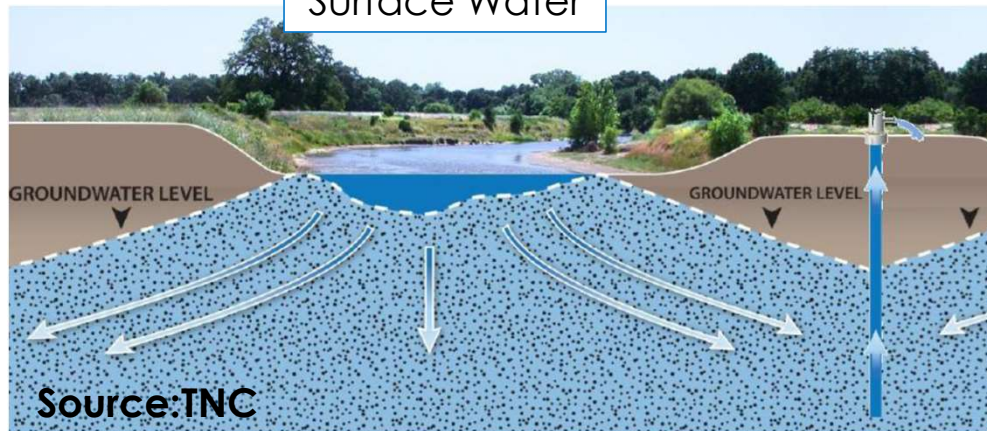
Municipal



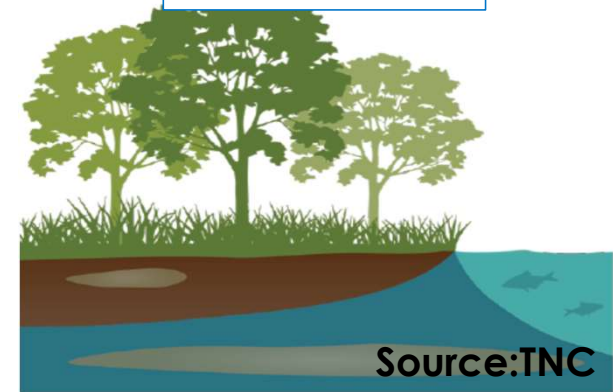
Domestic



Surface Water



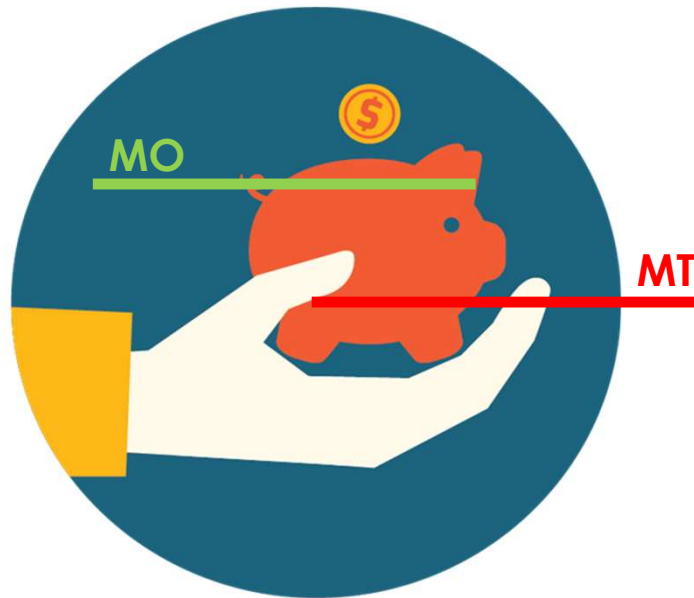
Environment



Sustainable Management Criteria

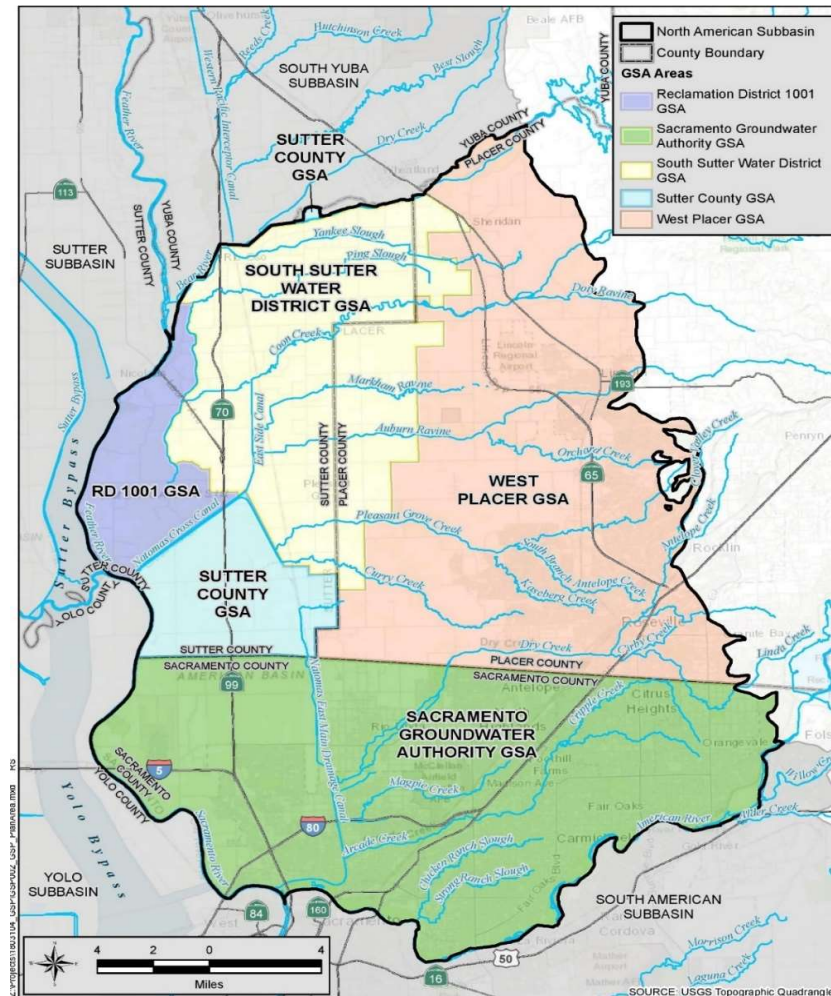
Measurable Objectives and Minimum Thresholds

Measurable Objective (MO) = levels that reflect desired conditions...that enable GSA to achieve sustainability



Minimum Threshold (MT) = levels at a site that when exceeded, either individually or at a combination of sites, may cause undesirable results

North American Subbasin (NASb)



NASb SGMA Timeline

NASb-wide Public Meetings

- Sustainable Management Criteria (Feb 10th)
- Water Budgets (March 10th)
- Projects / Management Actions (May 12th)
- Post-draft release (Sept 15th)

Oct 2015 -June 2017
GSAs form and begin
to develop GSP

**January 31,
2022**
GSP due to
State DWR

20 years with
5-year
assessments

**January 31,
2042**
Achieve
Sustainability

November 2020
Partial Draft GSP
Release Sections
1 through 5

Sept 1, 2021
Public Draft
Final GSP
Release
and Notify
Cities/Counties

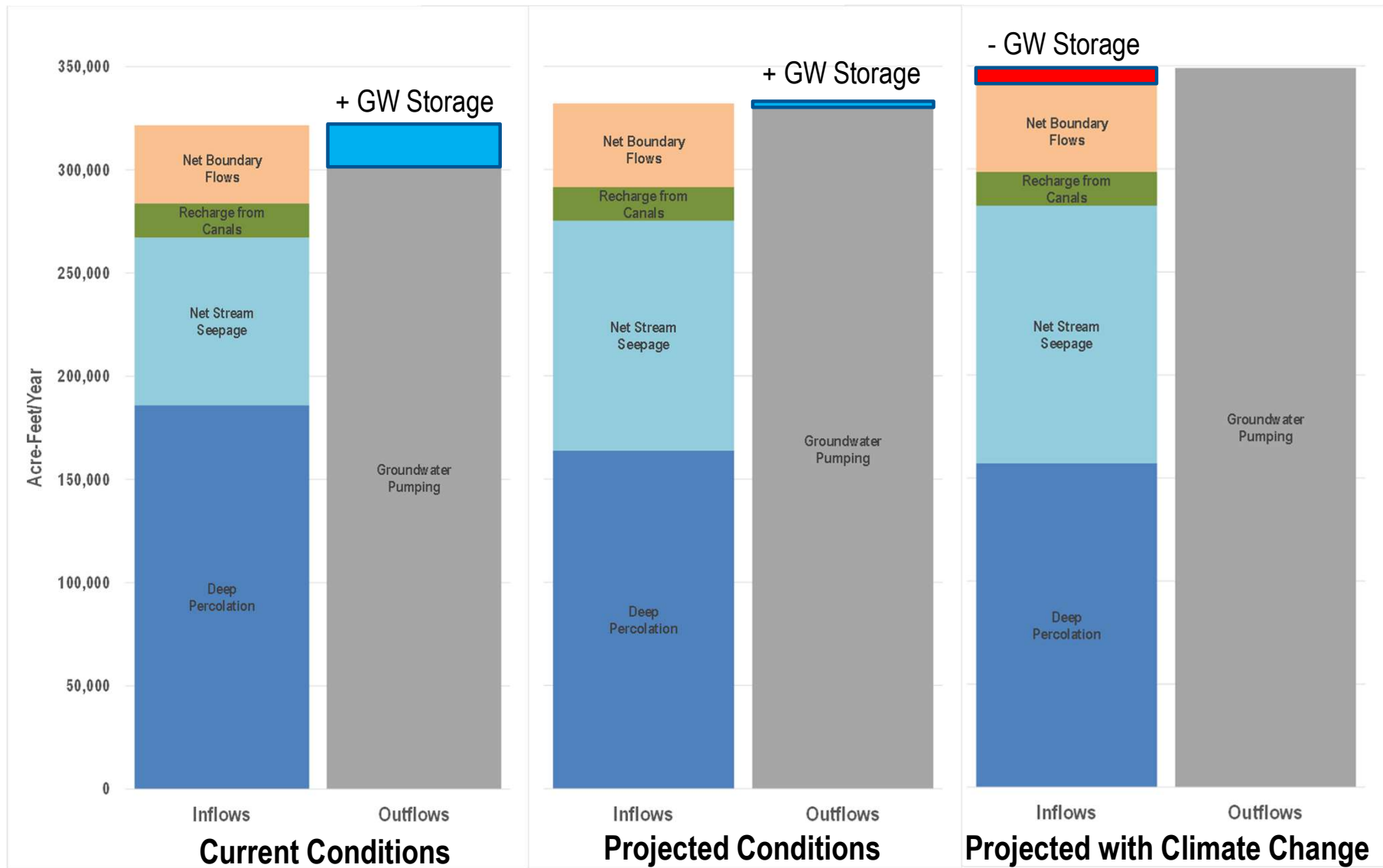
Adoption Schedule

SGA – 12/9/21
Sutter County – 12/14/21
South Sutter – 12/16/21
RD1001 – 12/22/21
West Placer
Roseville – 12/14/21
PCWA – 1/6/22
Placer County – 1/11/22
Lincoln – 1/11/22

GSP Organization

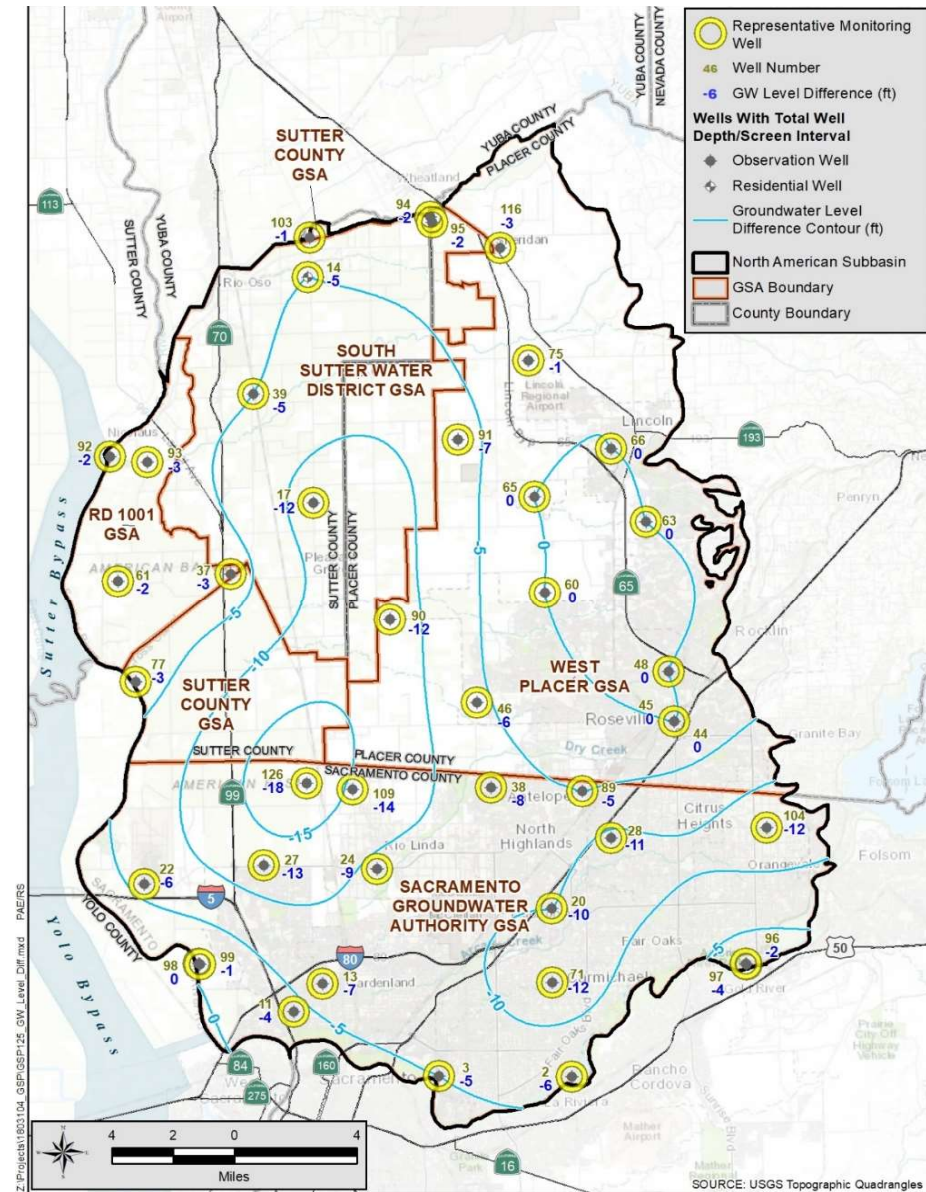
Section 1	Introduction	Section 7	Monitoring Networks
Section 2	Agency Information	Section 8	Sustainable Management Criteria
Section 3	Plan Area	Section 9	Projects and Management Actions
Section 4	Hydrogeologic Setting	Section 10	Plan Implementation
Section 5	Groundwater Conditions	Section 11	Notice and Communications
Section 6	Water Budgets	Section 12	References

20 Appendixes (Appendix S - Responses to Comments Received)



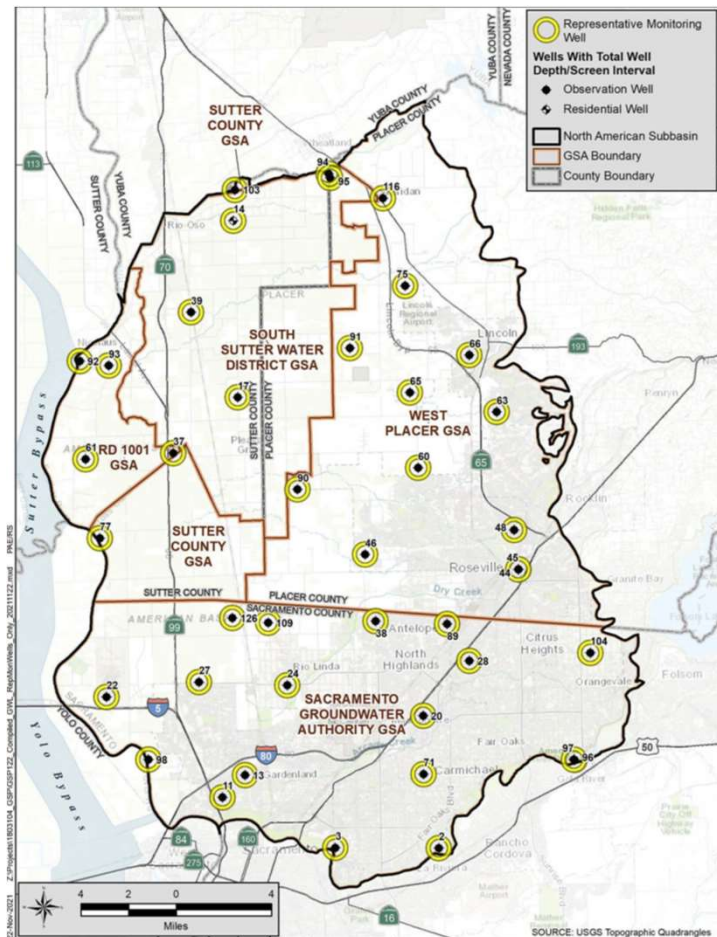
Projected Groundwater Level Changes

- 50-year simulation
- Used average 2014/2015 conditions as a baseline
- Subtracted the projected declines from the baseline to establish minimum thresholds
- Compared the effects of these future levels on beneficial uses and users

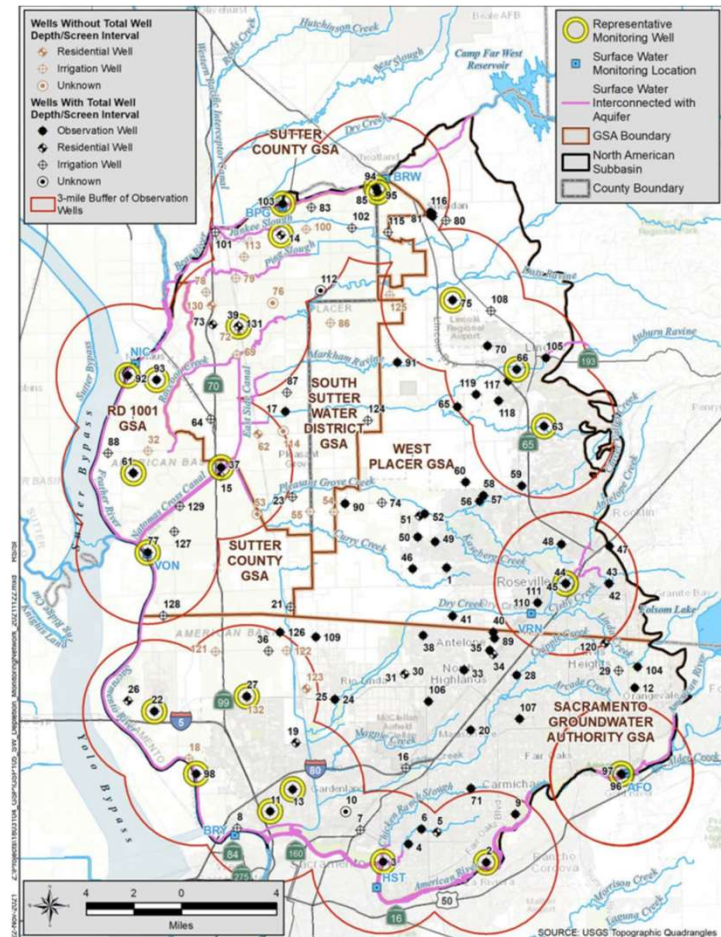


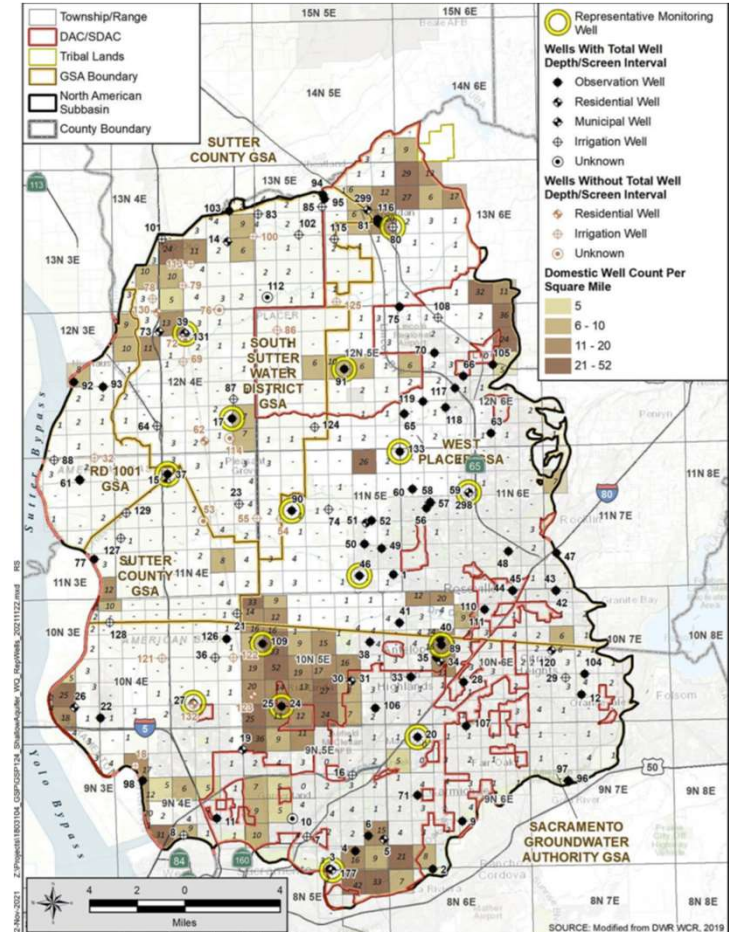
Water Level Monitoring Networks

Basin-wide Network






Interconnected Surface Water





Planned Projects and Management Actions

Project	Description
Project #1	RWA Regional Conjunctive Use Expansion (Phase I)
Project #2	Natomas Cross Canal Stability Berm and Channel Habitat Enhancements Project 
Management Action #1	Complete Planning for Sacramento Regional Water Bank
Management Action #2	Explore Improvements with Well Permitting Programs
Management Action #3	Proactive Coordination with Land Use Agencies
Management Action #4	Domestic/Shallow Well Data Collection/Communication Program 
Management Action #5	Groundwater Dependent Ecosystem Assessment Program 

Plan Implementation – Budget

Budget Item Description/Year	2022	2023	2024	2025	2026
Regulatory Requirements					
Groundwater Level Monitoring	\$7,300	\$7,500	\$7,700	\$7,900	\$8,100
Biennial Water Quality Monitoring	\$0	\$25,000	\$0	\$25,000	\$0
Annual Reports	\$65,000	\$50,000	\$40,000	\$40,000	\$40,000
5-Year GSP Assessment/Update	\$0	\$0	\$0	\$125,000	\$125,000
Modeling Support and Update	\$20,000	\$20,000	\$20,000	\$150,000	\$90,000
Data Management System Maintenance and Upgrades	\$10,000	\$10,000	\$10,000	\$10,000	\$10,000
Program Management and Administrative Expenses					
NASb GSA Coordination Meetings	\$3,800	\$3,800	\$3,800	\$3,800	\$3,800
Public Outreach	\$1,000	\$1,000	\$1,000	\$1,000	\$1,000
Website Maintenance	\$4,000	\$4,500	\$5,000	\$5,500	\$6,000
GIS Mapping Support	\$3,800	\$4,000	\$4,200	\$4,400	\$5,000
Lead Agency Administration	\$6,200	\$6,500	\$6,900	\$14,800	\$16,000
Projects and Management Actions					
Well Permit/Construction Practices	\$12,500	\$12,500			
Domestic/Shallow Well – Data/Communication Program	\$12,500	\$12,500			
GDE Assessment Program	\$20,000	\$10,000	\$10,000	\$ 7,500	\$ 7,500
Total Shared Costs					
Annual Estimated Cost	\$166,100	\$167,300	\$108,600	\$394,900	\$312,400
5-year Total Cost					\$1,149,300
Average Annual 5-year Cost	\$229,860	\$229,860	\$229,860	\$229,860	\$229,860
Estimated Average Annual Contribution by GSAs					
SGA	\$83,171	\$83,171	\$83,171	\$83,171	\$83,171
West Placer	\$76,912	\$76,912	\$76,912	\$76,912	\$76,912
SSWD	\$44,521	\$44,521	\$44,521	\$44,521	\$44,521
Sutter County	\$13,583	\$13,583	\$13,583	\$13,583	\$13,583
RD1001	\$11,673	\$11,673	\$11,673	\$11,673	\$11,673

Public Hearing – Comments

