

# **Draft Groundwater Sustainability Plan Agenda Item 6**

October 14, 2021



# NASb GSP Contents

## Section 1 – Introduction

Overview of SGMA and its associated requirements and contents of the Plan

## Section 2 – Agency Information

GSA organizational structure, authority, and plan manager

## Section 3 - Description of Plan Area

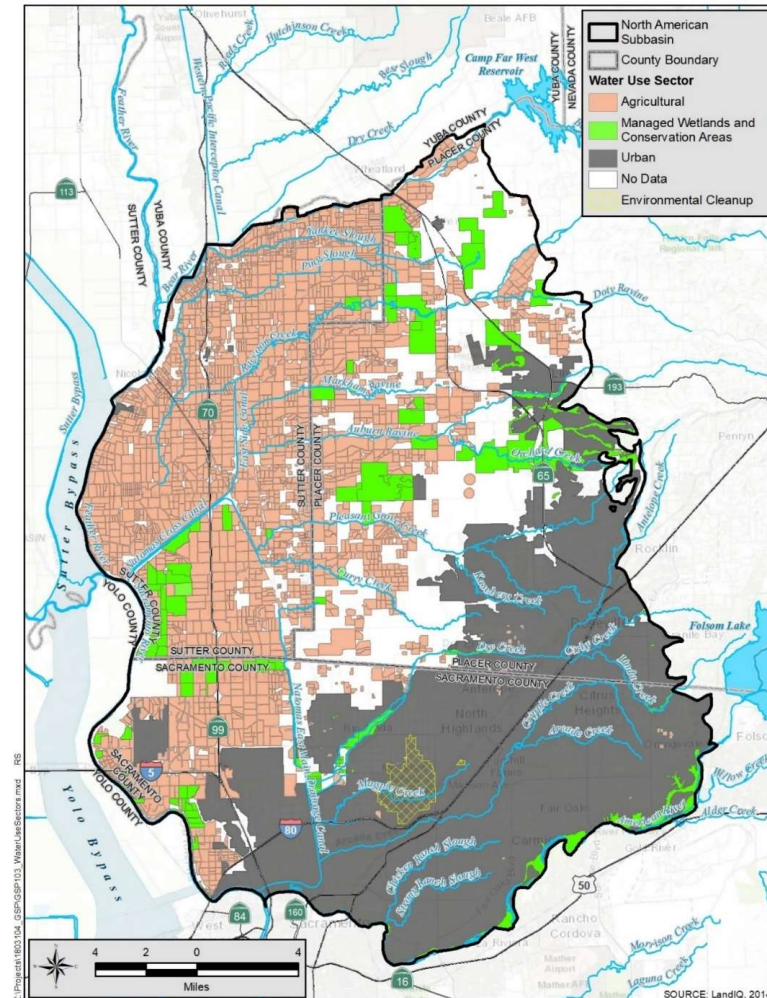
Maps and descriptions of water and land use

## Section 4 – Hydrogeologic Setting

Basin boundaries, regional geology, and aquifer information

## Section 5 – Groundwater Conditions

Groundwater levels, water quality, groundwater dependent ecosystems, interconnected surface water



# NASb GSP Contents (cont.)

## Section 6 – Water Budgets

Historical water budget and forecasts of groundwater use for the next 50-years, including with climate change

## Section 7 – Monitoring Networks

Describes the monitoring networks to be used to assess sustainability indicators and monitoring protocols

## Section 8 – Sustainable Management Criteria

Sustainability goal and undesirable results for sustainability indicators, minimum thresholds and measurable objectives

Model Baseline Condition	Average Annual Storage Change (acre-feet)
Historical (water years 2009 through 2018)	31,900
Current (water years 1970 through 2019)	14,900
Projected Future Demands over 50 years (using 1970 through 2019 hydrology)	5,400
Projected Future Demands over 50 years with Climate Change (using 1970 through 2019 hydrology)	-3,500

## NASb GSP Contents (cont.)

## Section 9 – Projects and Management Actions

Current, planned, and supplemental projects and management actions

## Section 10 – Plan Implementation

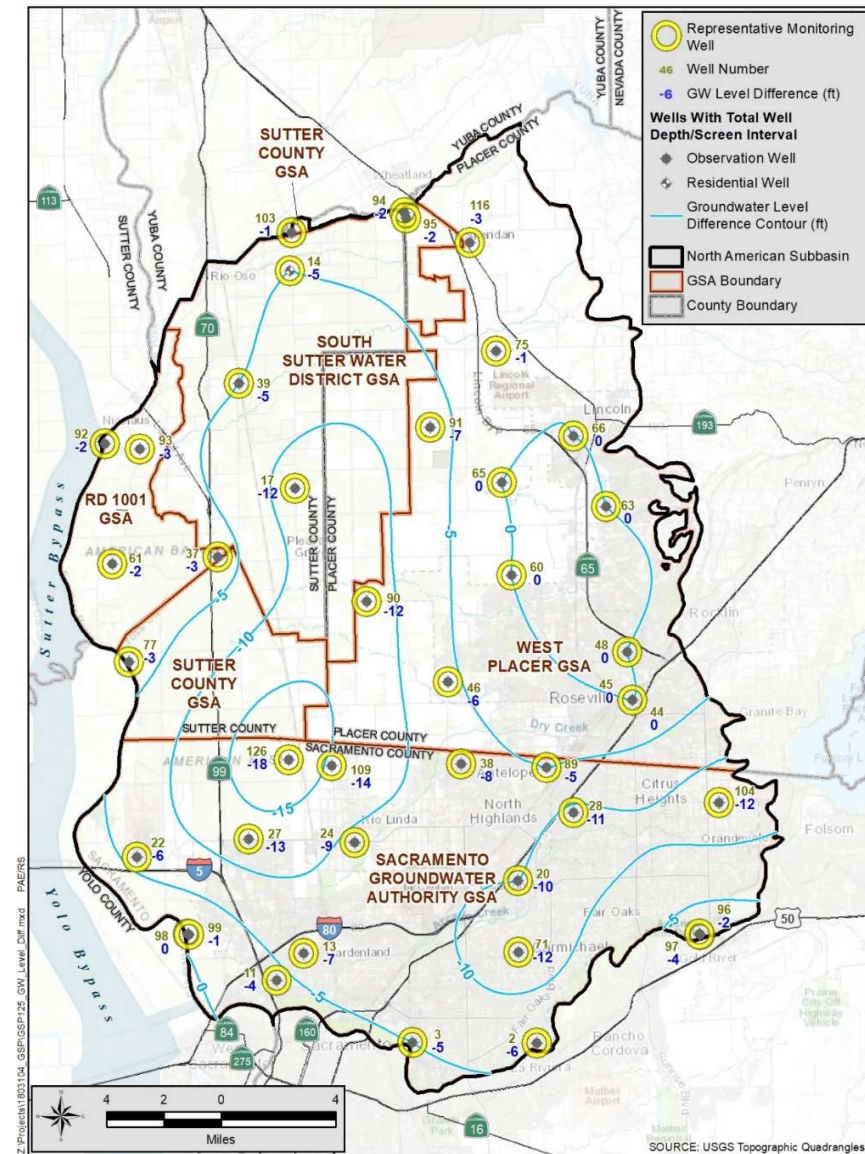
Overview of budget and how the GSAs will regularly perform the activities needed to manage the Subbasin

## Section 11 – Notice and Communications

## Summary of activities with interested parties

## Section 12 – References

## List of materials used to develop this Plan



# Draft Implementation Budget

Budget Description/Year	2022	2023	2024	2025	2026
Regulatory Requirements					
Groundwater Level Monitoring	\$7,300	\$7,519	\$7,745	\$7,977	\$8,216
Biennial Water Quality Monitoring	\$0	\$20,000	\$0	\$20,000	\$0
Annual Reports	\$60,000	\$50,000	\$40,000	\$40,000	\$40,000
5-Year GSP Assessment/Update	\$0	\$0	\$0	\$125,000	\$125,000
Modeling Support and Update	\$20,000	\$20,000	\$20,000	\$150,000	\$90,000
Data Management System Maintenance and Upgrades	\$10,000	\$10,000	\$10,000	\$10,000	\$10,000
Program Management and Administrative Expenses					
NASb GSA Coordination Meetings	\$3,800	\$3,800	\$3,800	\$3,800	\$3,800
Public Outreach	\$1,000	\$1,000	\$1,000	\$1,000	\$1,000
Website Maintenance	\$4,000	\$4,500	\$5,000	\$5,500	\$6,000
GIS Mapping Support	\$3,800	\$4,000	\$4,300	\$4,700	\$5,200
Lead Agency Administration	\$6,200	\$6,500	\$6,900	\$14,800	\$16,000
Projects and Management Actions					
Management Action: Well Permit/Construction Practices	\$12,500	\$12,500			
Total Shared Costs					
Annual Estimated Cost	<b>\$128,600</b>	<b>\$139,819</b>	<b>\$98,745</b>	<b>\$382,777</b>	<b>\$305,216</b>
5-year Total Cost					\$1,055,157
Average Annual 5-year Cost	\$211,031	\$211,031	\$211,031	\$211,031	\$211,031
Estimated Average Annual Contribution by GSAs					
SGA	\$76,393	\$76,393	\$76,393	\$76,393	\$76,393
West Placer	\$70,484	\$70,484	\$70,484	\$70,484	\$70,484
SSWD	\$40,940	\$40,940	\$40,940	\$40,940	\$40,940
Sutter County	\$12,240	\$12,240	\$12,240	\$12,240	\$12,240
RD1001	\$10,974	\$10,974	\$10,974	\$10,974	\$10,974

# SGMA – Still Need to Complete

- Comments due October 29, 2021
  - Already received comments from California Department of Fish and Wildlife and National Marine Fisheries Service
- Address Comments
- Complete Implementation Agreement
- Adopt GSP and Implementation Agreement in December

# **Groundwater Management Program Update Agenda Item 7**

October 14, 2021





