

SACRAMENTO GROUNDWATER AUTHORITY
SPECIAL MEETING OF THE BOARD OF DIRECTORS

Thursday, October 14, 2021; 2:00 p.m.

GETTING TO KNOW THE SCGA

Presentation Outline

- Water Forum Agreement
- SCGA Creation and Overview
- The 2006 Groundwater Management Plan
- The SGMA Era
 - GSP Alternative
 - GSA Changes
 - GSP development
- GSP highlights
 - Basin Conditions
 - Projects and Management Actions
 - Key Issues
- SCGA Financing

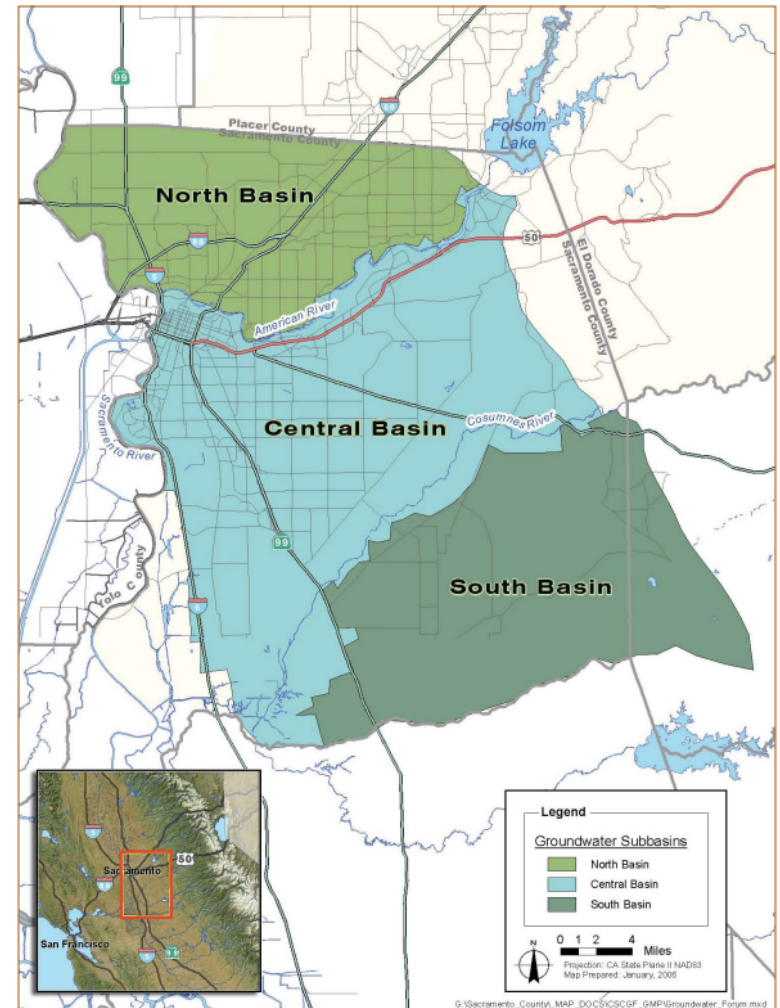
The Water Forum Agreement



Groundwater Management Element

- North Area
- South Area
- Galt Area

Figure ES-1. Sacramento County Groundwater Basins



Groundwater Management Element

- RECOMMENDATIONS TO INSURE BASIN-WIDE COORDINATION AMONG THE LOCAL GROUNDWATER MANAGEMENT ENTITIES

There must be a mechanism to:

- Safeguard the viability of the total basin through coordination of policies and activities across the three sub-areas of the basin
- Facilitate cooperation among the three sub-areas on projects or programs of mutual benefit
- Promote efficient operation through cost-sharing arrangements, shared staff, equipment, facilities, etc. if possible and appropriate

Central Sacramento County Groundwater Forum

- Water Forum Successor Effort
- Central Sacramento County Groundwater Forum (2002)
- Groundwater Management Plan (February 2006)



Sacramento Central Groundwater Authority

- **Joint Powers Agreement – August 2006**
- County of Sacramento*
- City of Elk Grove
- City of Folsom*
- City of Rancho Cordova
- City of Sacramento*

Sacramento Central Groundwater Authority

- **Board of Directors**

City of Elk Grove
City of Folsom
City of Rancho Cordova
City of Sacramento
County of Sacramento
Elk Grove WD/Florin RCD
Golden State Water
California American Water

Agricultural Interests
Agricultural-Residential
Commercial-Industrial
Conservation Landowners
Public Agencies – Self Supplied
Regional San

formerly
Omochumne-Hartnell WD
Rancho Murieta CSD

SCGA Staffing

- Interim Executive Director – 35-40% time consultant
- Technical Consultant Staff – 40-50% time consultant
- Technical/Administrative Staff – 1.5 FTE County staff
- Counsel – County Counsel
- Finance – Sacramento County
- Meeting Management – County Clerk

The SGMA Era

- December 2016 - Alternative Submittal Prepared and Submitted for South American Subbasin by SCGA
- November 2019 – Alternative Not Approved by DWR
- MOU Negotiated Among Five GSAs (May 2020)
- Proposition 1 Grant – \$1,000,000
- Prop 68 Grant - \$958,957
- March 2020 – Selected Larry Walker Associates and Woodard & Curran to complete the GSP
- GSP Initial Notification – July 2020

South American Subbasin



GSP Highlights

NDGSA
NORTHERN DELTA
GROUNDWATER
SUSTAINABILITY AGENCY



SLOUGHHOUSE
Resource Conservation District
HERALD | SLOUGHHOUSE | WILTON

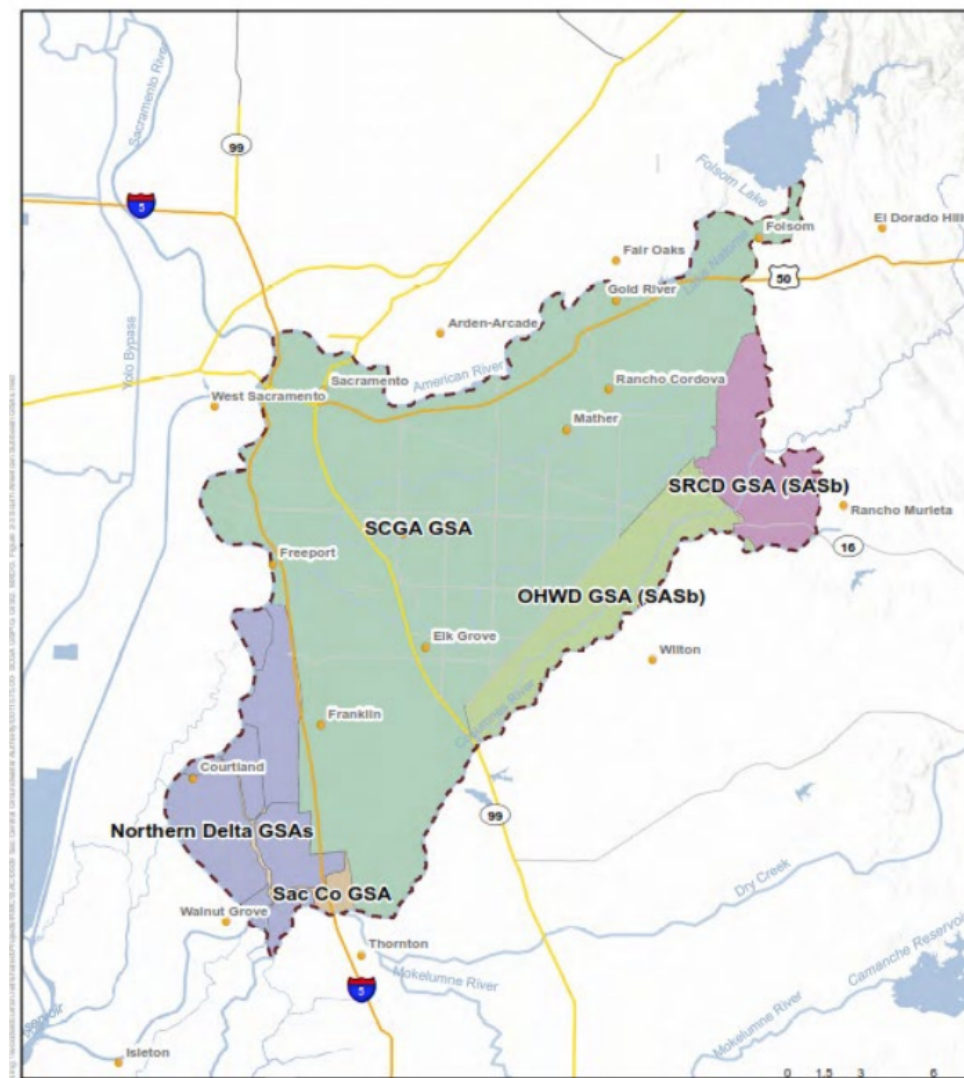
SACRAMENTO
COUNTY

SCGA

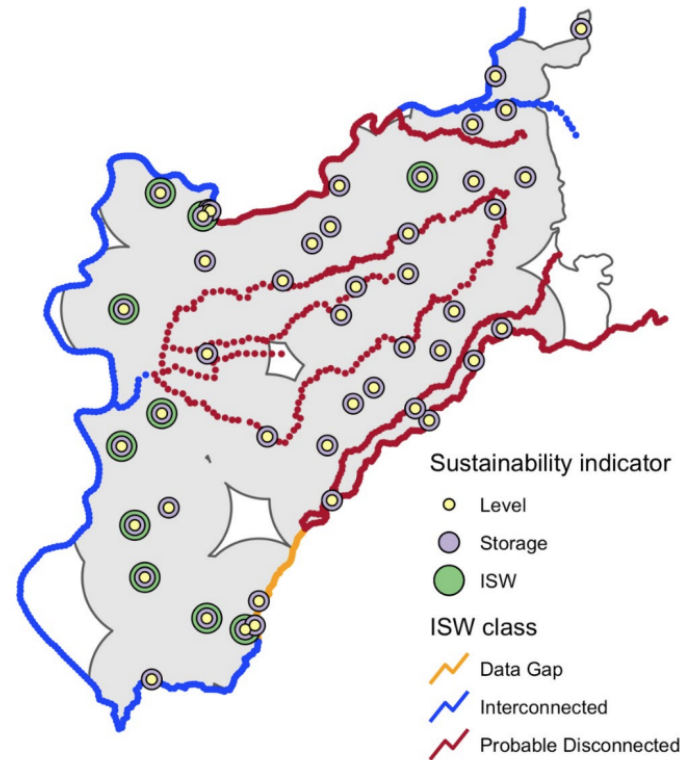
Sacramento Central
Groundwater Authority

Omoichumne - Hartnell Water District
Serving the Community of the Cosumnes River

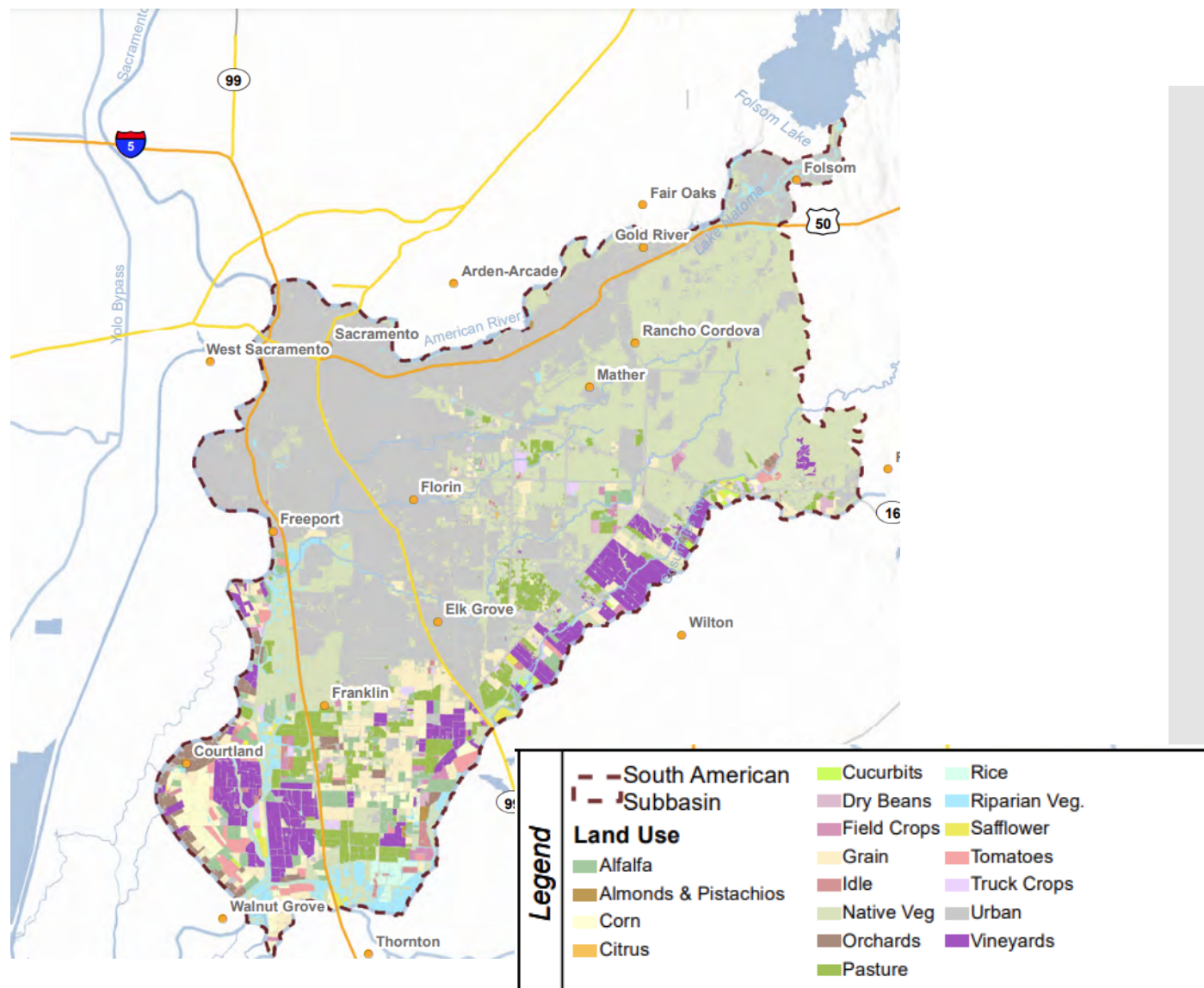
South American
SUBBASIN



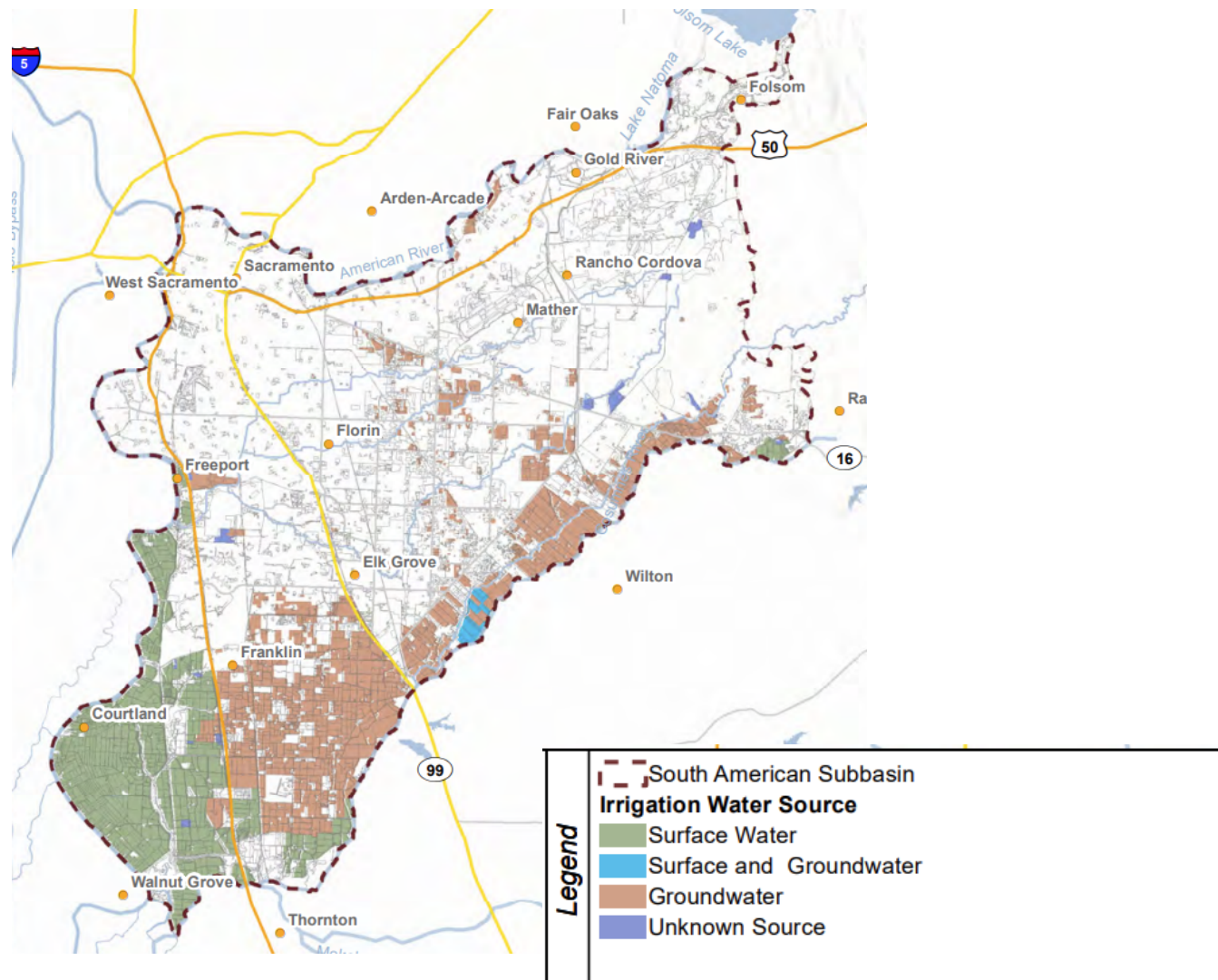
Sustainability Indicators



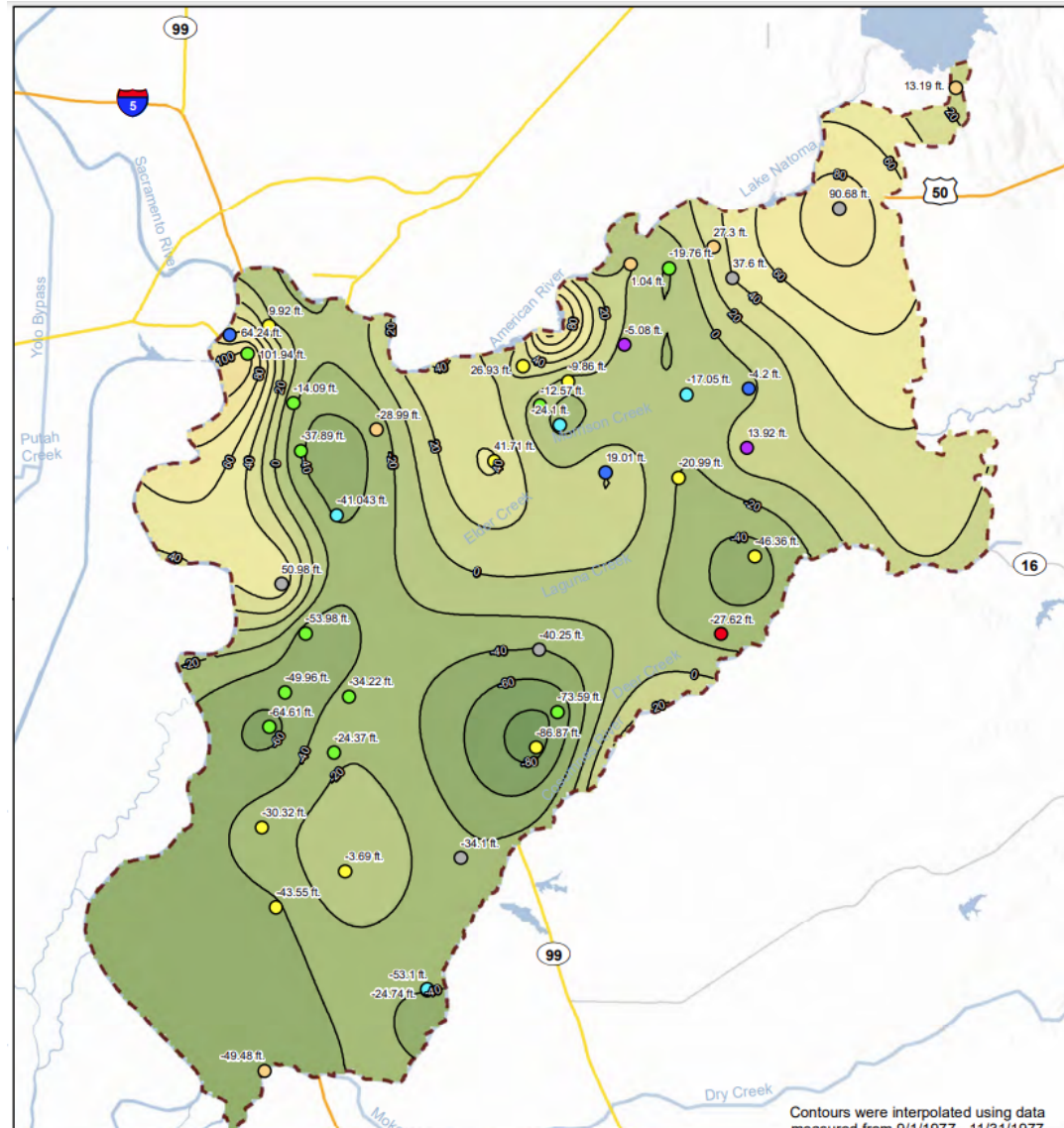
Plan Area Land Use



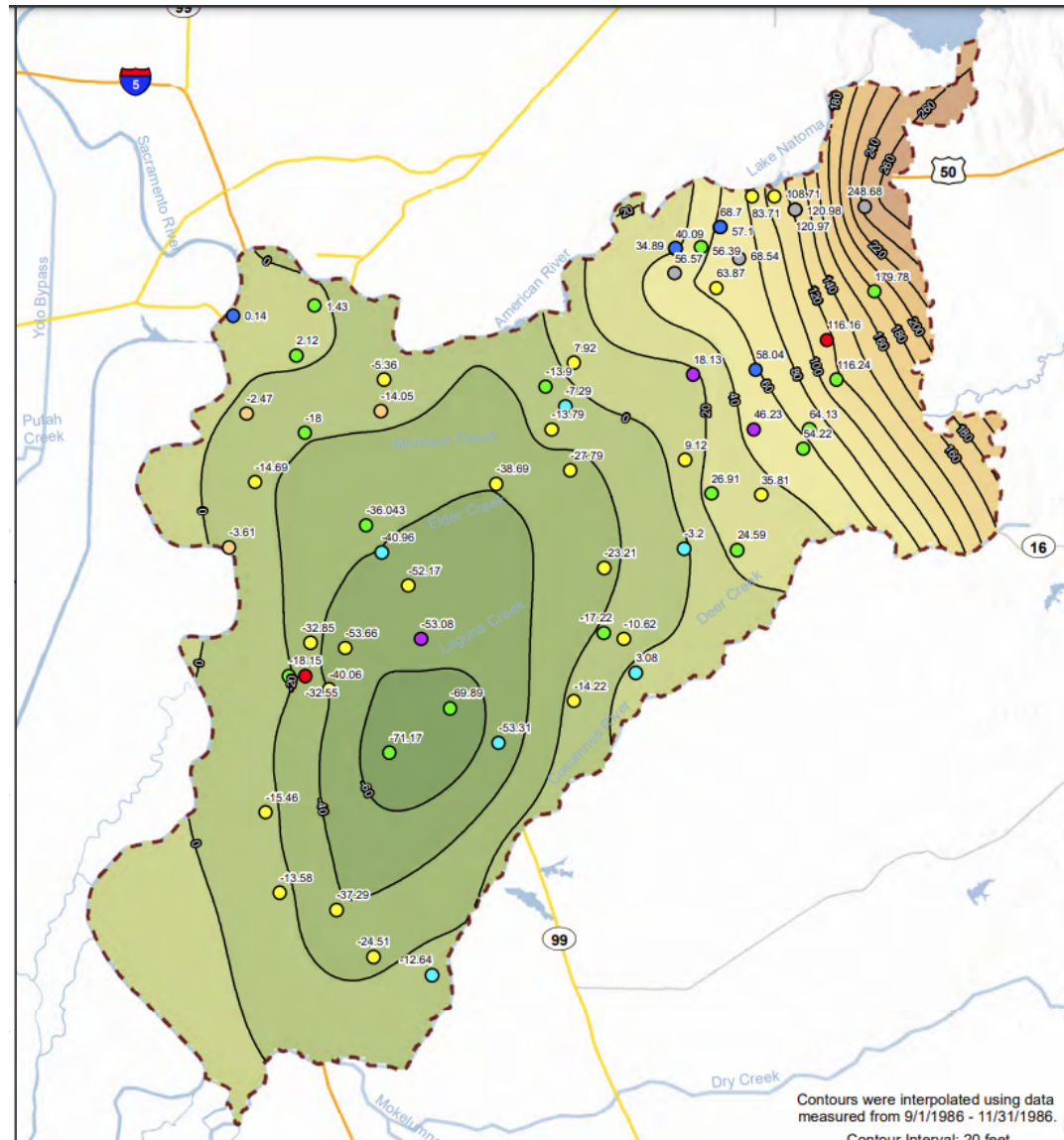
Plan Area Water Source



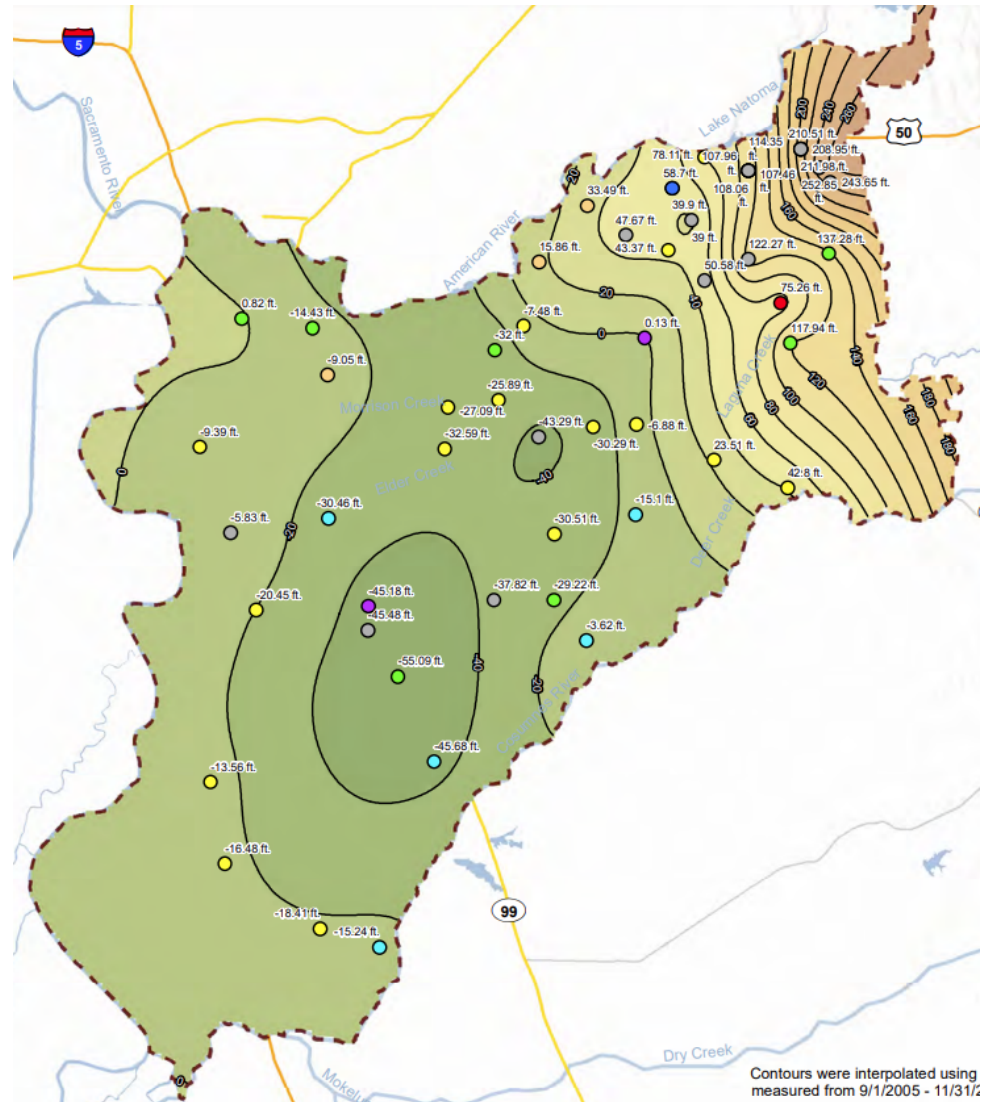
Groundwater Contours Fall 1977



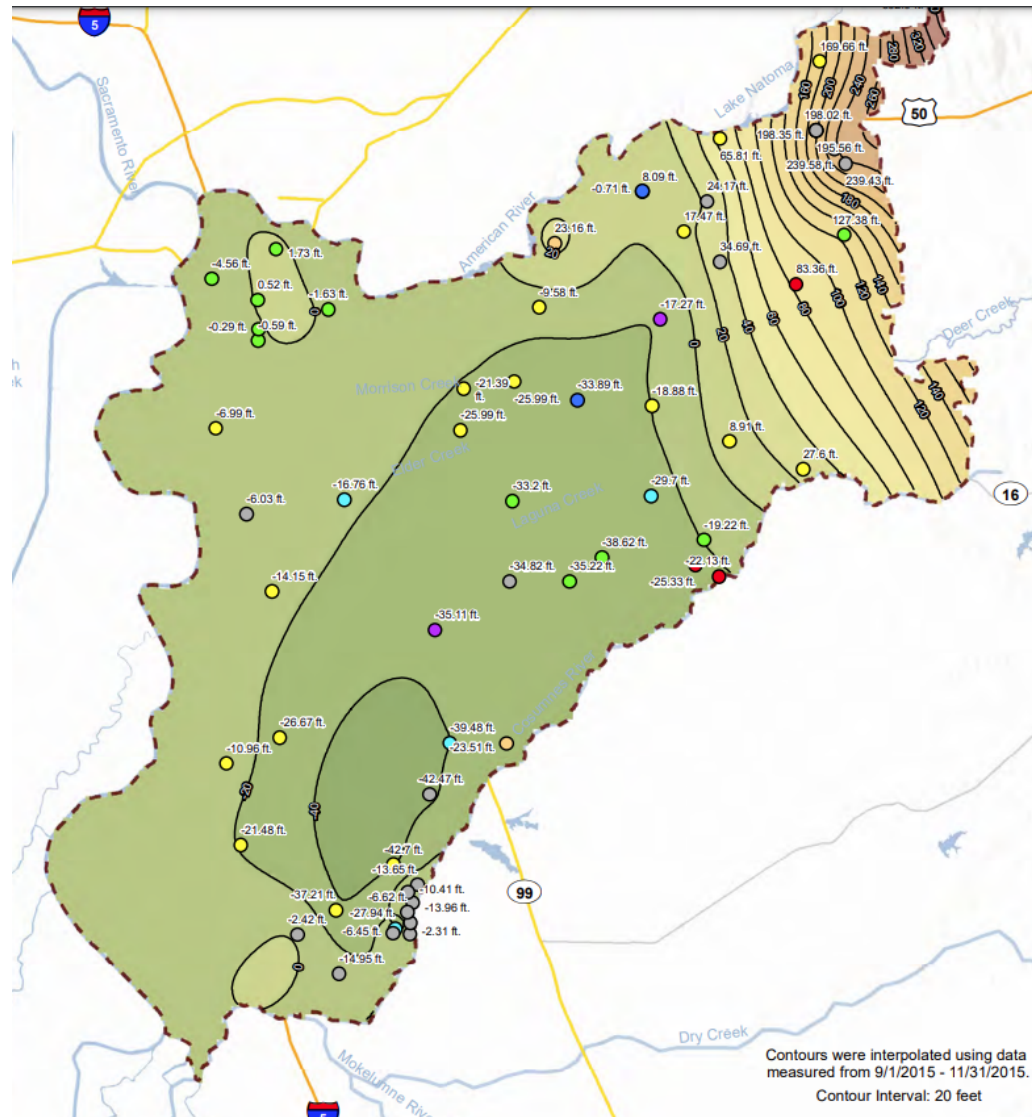
Groundwater Contours Fall 1986



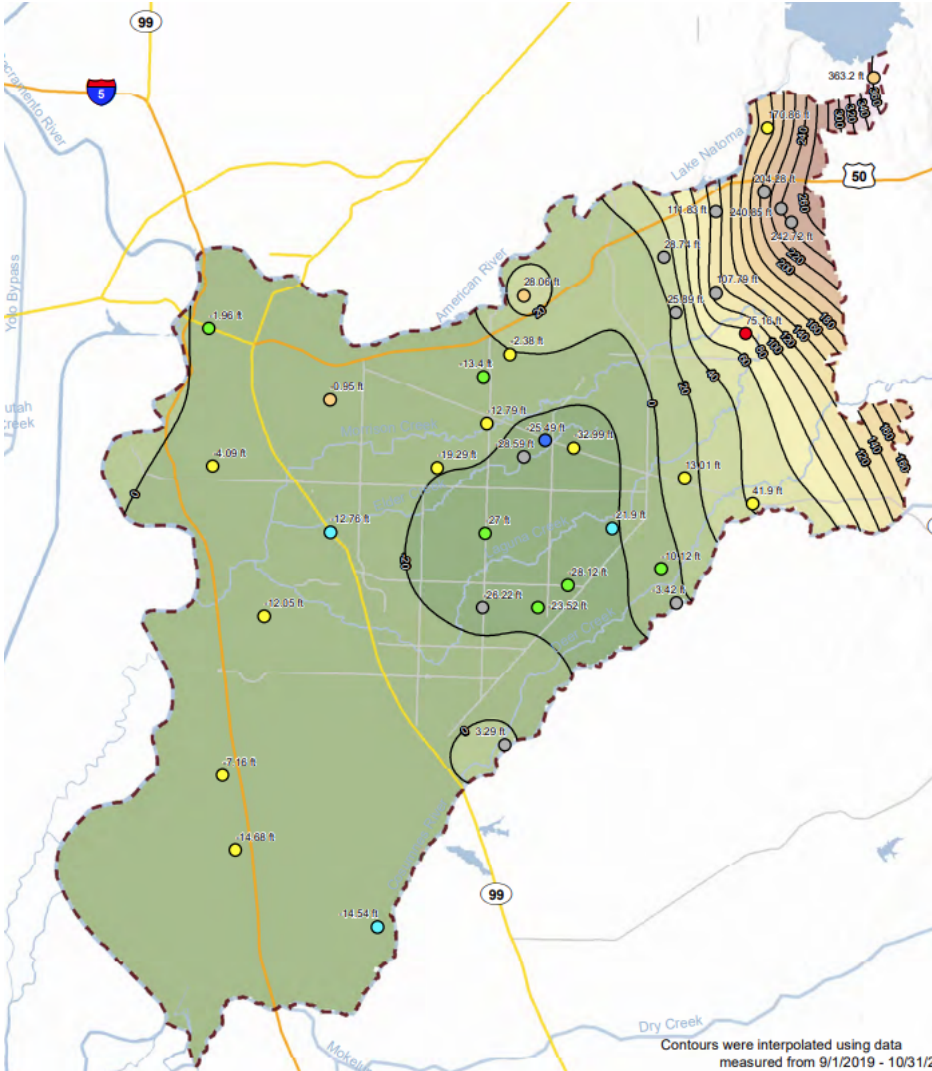
Groundwater Contours Fall 2005



Groundwater Contours Fall 2015



Groundwater Contours Fall 2019



Projects and Management Actions

- **Projects**

- Harvest Water
- OHWD Cosumnes Recharge
- Regional Conjunctive Use
- SAFCA Flood-MAR

- **Management Actions**

- Well Permitting
- Well Protection
- Coordination Activities

Sustainability

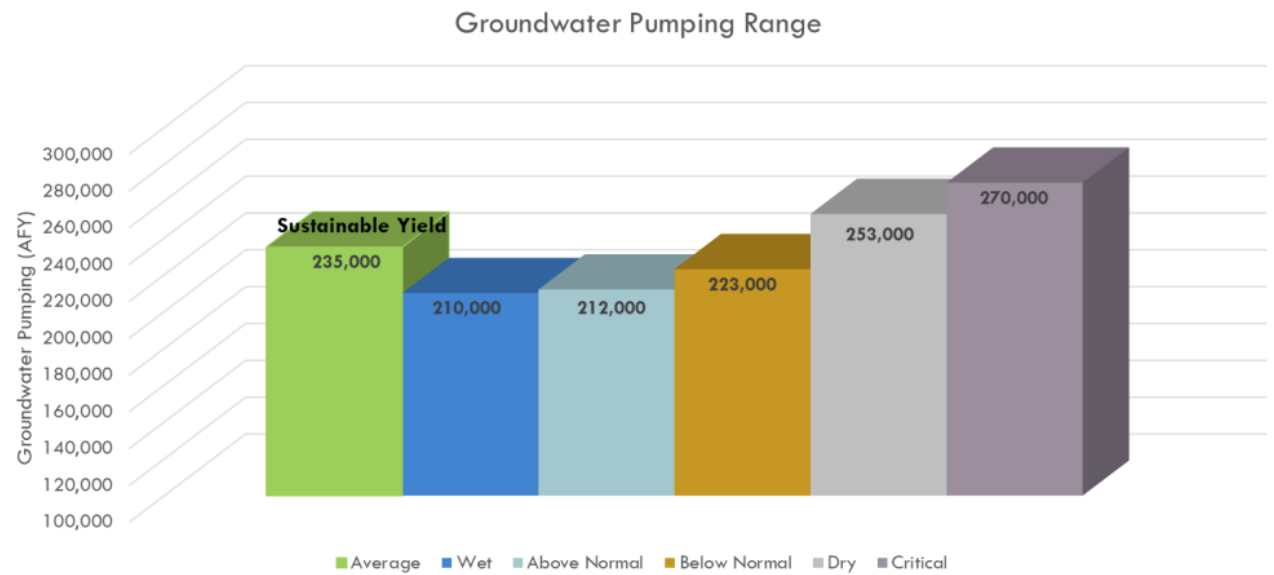


Figure 2.5-3- Operational Flexibility Provided by the SASb Sustainable Yield

Sustainability

Table ES-3: Projected change in groundwater storage in each baseline condition

Baseline	Average Annual Groundwater Storage Change (AFY)
Historical Conditions	+7,700
Current Conditions	+2,200
Projected Conditions without Climate Change	-1,100
Projected Conditions with Climate Change	-6,200

692 **Table 4-3:** Summary of Project Management Action Modeling Scenarios Without
693 Climate Change

CoSANA Model Scenarios	Description	Average Annual Groundwater Pumping (AFY)	Average Annual Groundwater Storage Change (AFY)
PCBL	Projected Condition Baseline	234,000	-1,100
Scenario 1	Demand reduction (5% Ag; 10% Urban)	216,500	+2,000
Scenario 2	Demand reduction (10% Ag; 10% Urban)	210,900	+2,800
Scenario 3	Harvest Water & OHWD Recharge	211,800	+3,200
Scenario 4	Regional Conjunctive Use	227,400	+200
Scenario 5	Harvest Water, OHWD Recharge & Regional Conjunctive Use	205,200	+4,500

694 **Table 4-4:** Summary of Project Management Action Modeling Scenarios With
695 Climate Change

CoSANA Model Scenarios	Description	Average Annual Groundwater Pumping (AFY)	Average Annual Groundwater Storage Change (AFY)
PCBL CC	Projected Condition Baseline with Climate Change	245,800	-6,200
Scenario 2	Demand reduction (10% Ag; 10% Urban)	220,400	-1,800
Scenario 4	Regional Conjunctive Use	239,100	-4,800
Scenario 5	Harvest Water, OHWD Recharge & Regional Conjunctive Use	216,600	-100

SCGA Financing

FY22/23 SCGA Estimated Revenues

	Connection Portion		Usage Portion		FY22/23	FY21/22
Member Water Purveyors (See Note 1)	Retail Water Connections	Connection	Groundwater (GW) Pumping (Acre Feet)	Usage	Estimated Rate Revenue	Contributions
City of Folsom	9,684	\$ 24,881	-	\$ -	\$ 24,881	\$ 30,639
City of Rancho Cordova		\$ -		\$ -	\$ -	\$ 20,000
City of Sacramento	95,297	\$ 260,317	1,800	\$ 6,732	\$ 267,049	\$ 134,850
City of Elk Grove		\$ -		\$ -	\$ -	\$ 20,000
County of Sacramento/ SCWA	54,653	\$ 148,546	19,615	\$ 73,360	\$ 221,906	\$ 180,592
FRCD/Elk Grove Water District	12,866	\$ 33,632	4,211	\$ 15,749	\$ 49,381	\$ 45,647
Cal-Am Water Company	37,235	\$ 100,646	16,655	\$ 62,290	\$ 162,936	\$ 136,162
Golden State Water Company	15,332	\$ 40,413	9,547	\$ 35,706	\$ 76,119	\$ 75,599
Member Water Purveyor Total		\$ 608,435		\$ 193,837	\$ 802,272	\$ 643,489
Tax Roll Levy Total	(See Notes 2 and 3)				\$ 172,485	\$ 110,327
Total					\$ 974,757	\$ 753,816

Notes: 1. Calculations use reported 2020 connections and groundwater use.

2. Tax Roll Levy calculations are made at the parcel level.

3. FY21/22 contributions are based on \$100,327 from SCWA Zone 13 on behalf of Ag and Ag-Res Parcels, and \$10,000 from SRCSD.

Questions

?