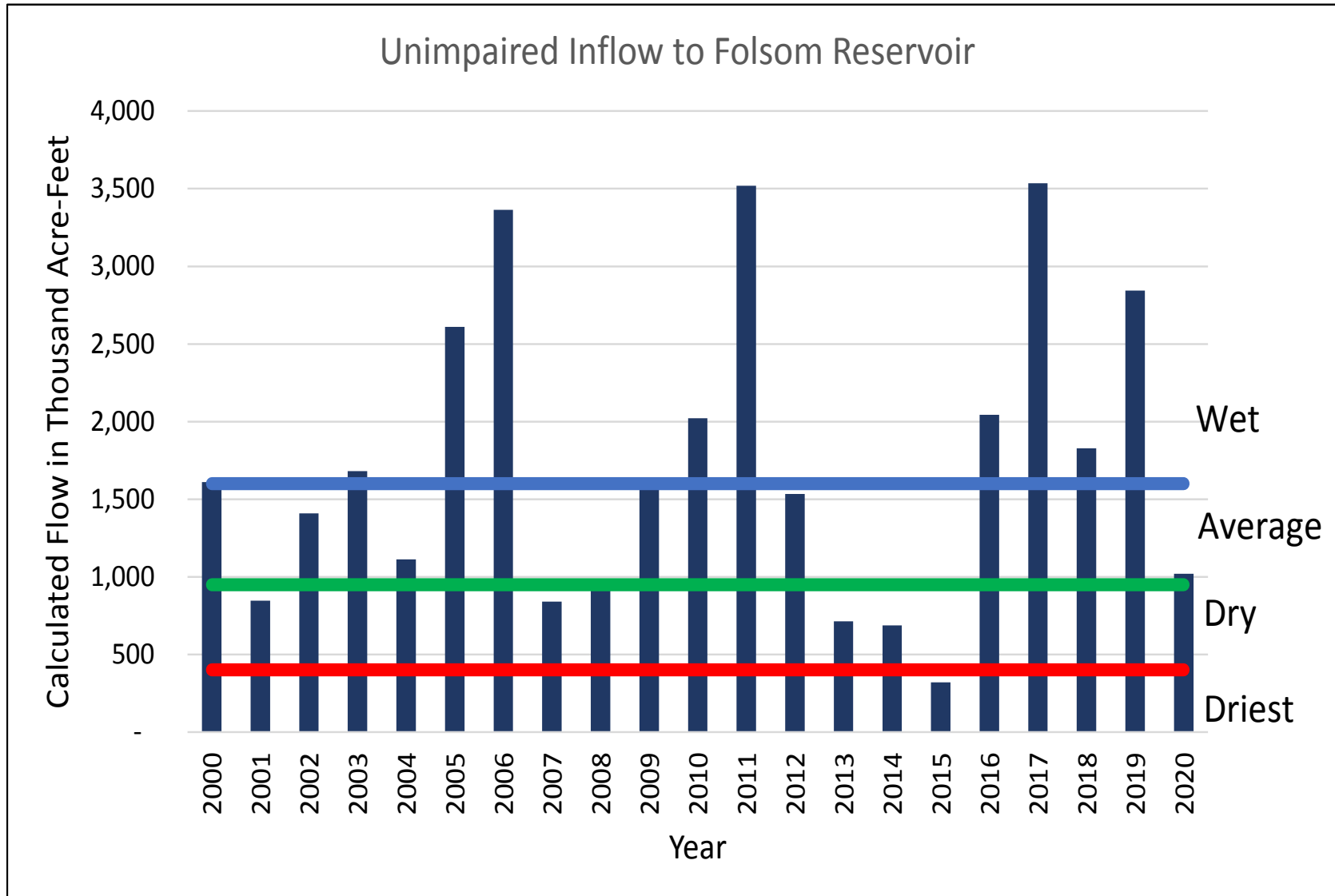


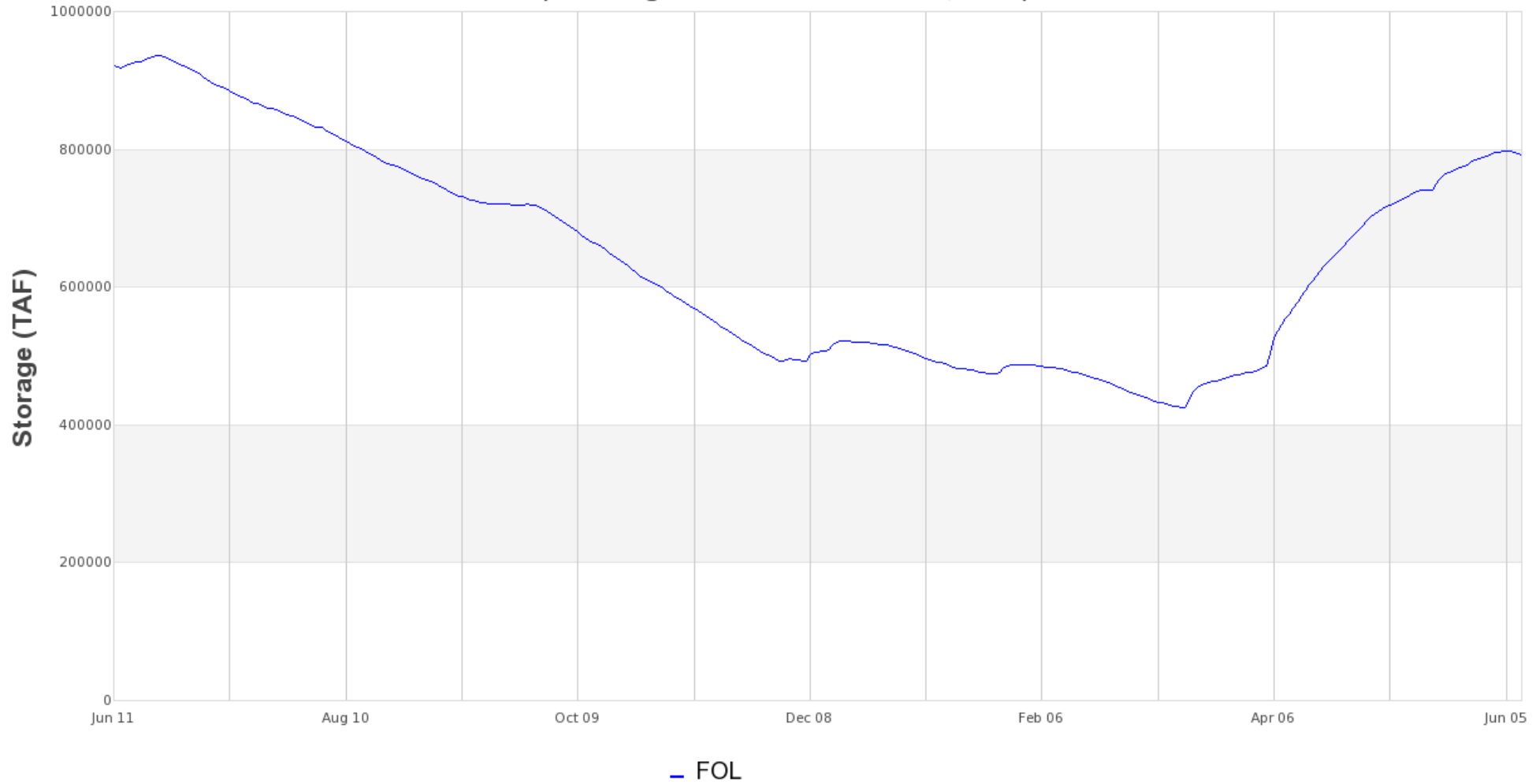
# Hydrologic Conditions



- Data from Department of Water Resources and Water Forum
- 2000 through 2020 average is 1.7 million acre-feet

# Folsom Reservoir Storage

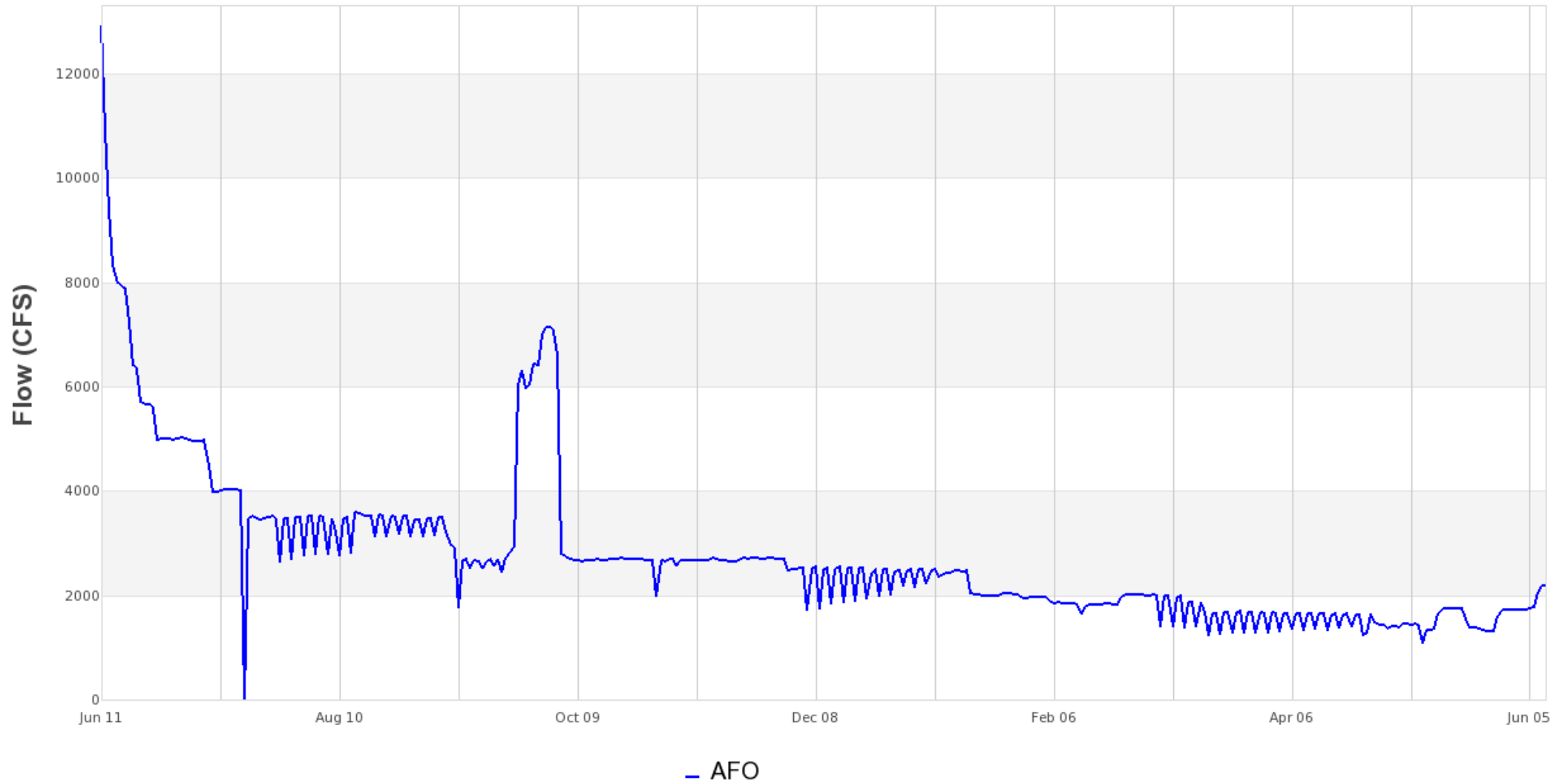
Storage (TAF), Average Daily - Station FOL  
(Showing 12 Months to June 10, 2020)

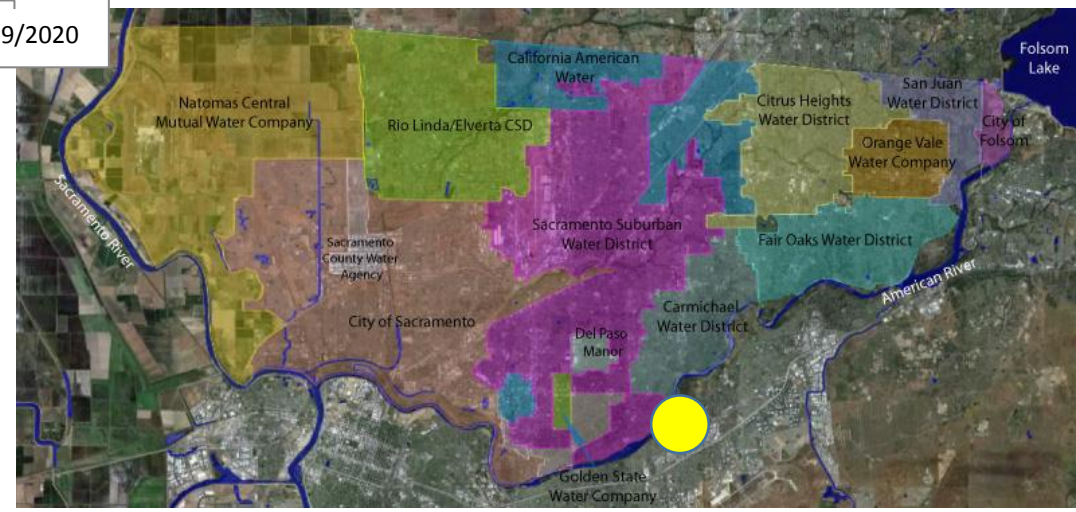
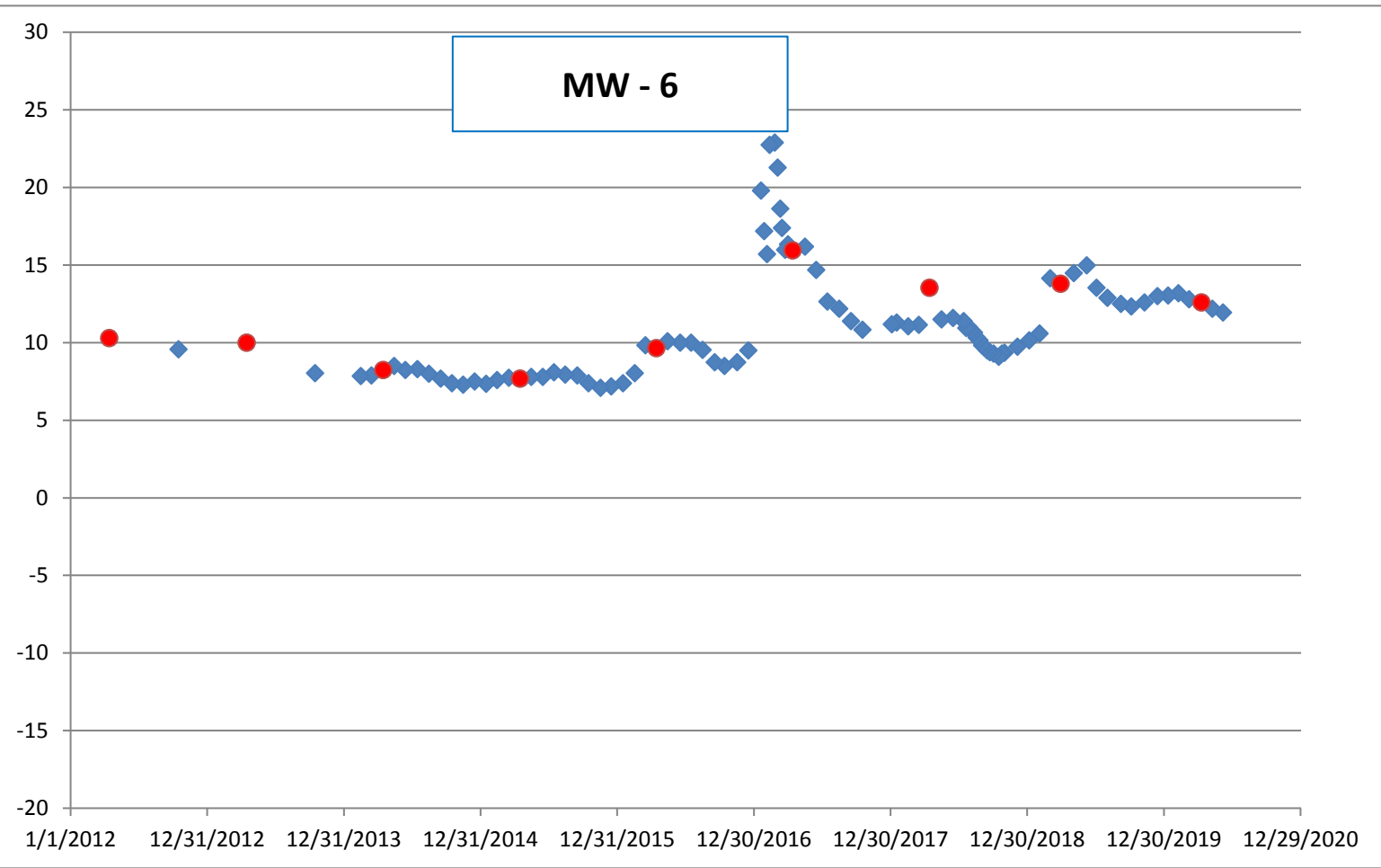


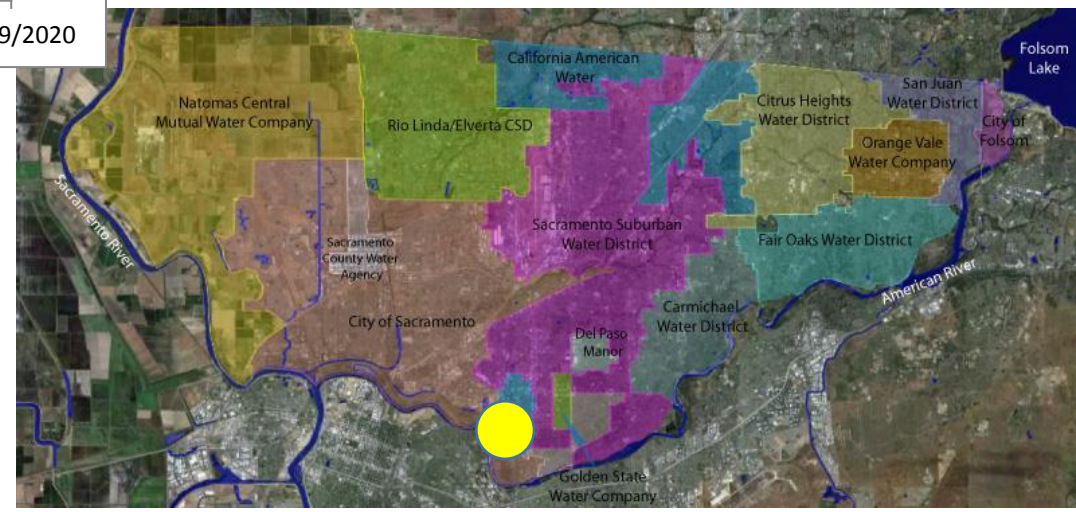
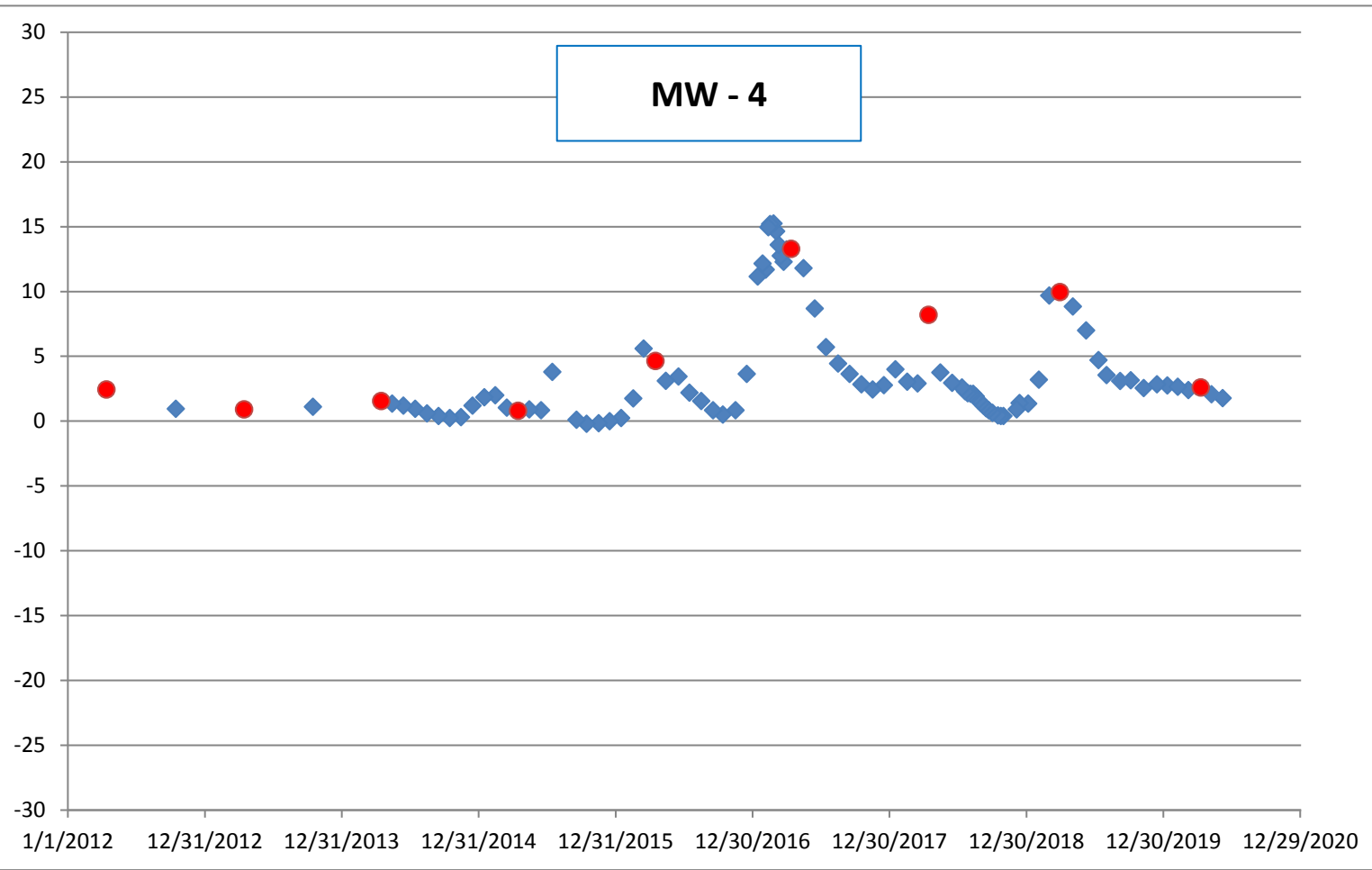
Downloaded from [waterforum.org](http://waterforum.org)

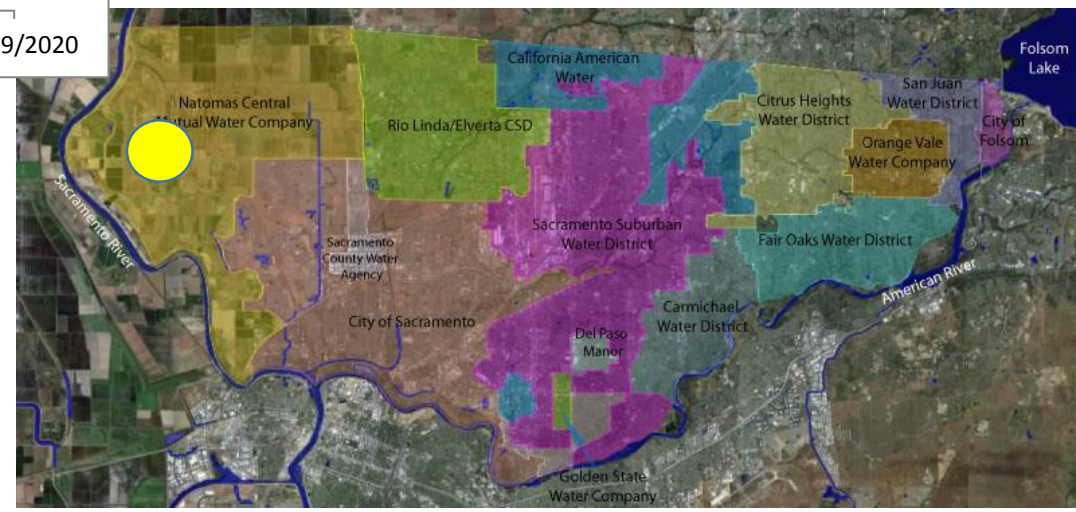
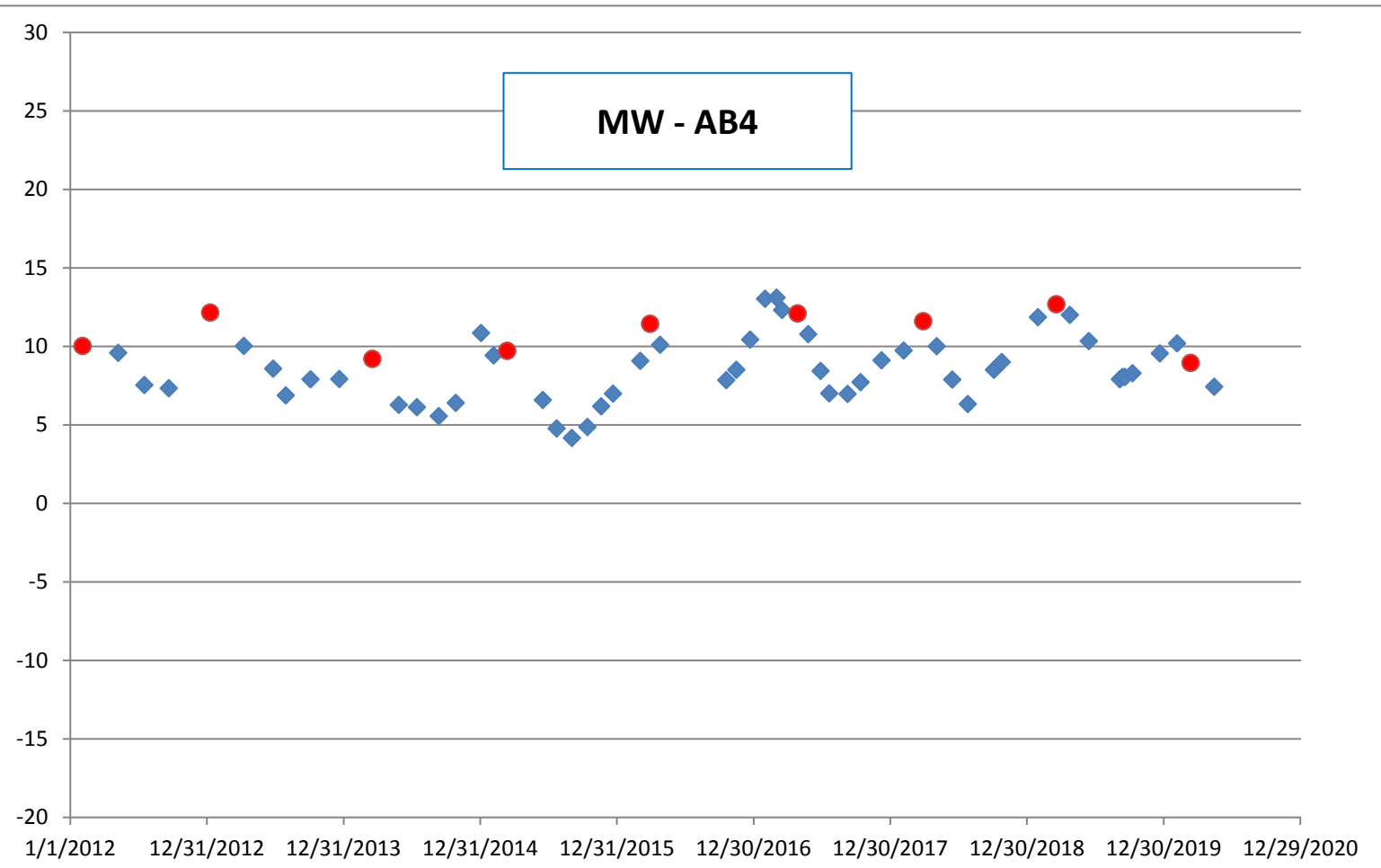
# American River Flow at Fair Oaks

Flow (CFS), Average Daily - Station AFO  
(Showing 12 Months to June 10, 2020)









# MW Lone Oak

